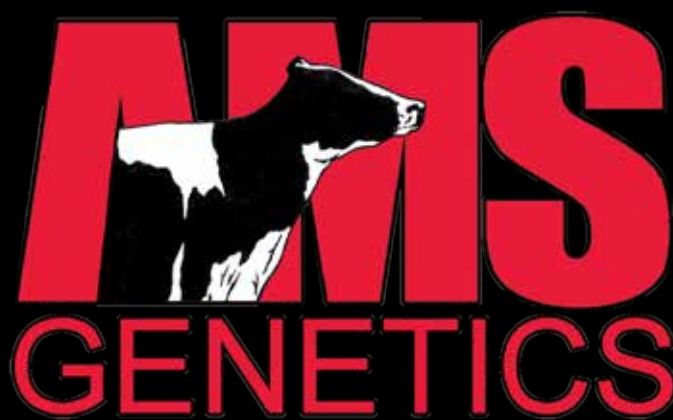


ONLINE BULL SALE

October 6-10, 2014

www.bull-sale.com





photos © Han Hopman



Sourcing Genetics for the World



Housing and Management Assistance in the U.S. for International buyers on heifers and cows

EXAMPLES OF DONOR COWS THAT AMS GENETICS IS WORKING WITH



Snowbiz Sympatico Sofia-Red
GTPI+2526 GRZG+161 GLPI+3140
#1 GTPI, GLPI & GRZG in the Breed!



Larcrest Cale VG-89-2YR
GTPI+2324 +701NM\$ +3.17T
Working with several Cale daughters



Stone-Rail Mogul Sparkle
GTPI+2494 +878NM\$ +2.94T
Tremendous Outcross!



Ms Apples Uno Armana *RC
GTPI+2379 +714NM\$ +3.53T
Highest GTPI & GLPI daughter of APPLE EX-96



CONTACT INFO

AMS Genetics International LLC
Mail address: PO Box 12 | Fairplay, MD 21733-0012 USA
Office Phone: +1 240-329-0169
Steve Mower Cell: +1 240-520-5906
Email: steve.mower@amsgenetics.com

SERVICES:

- Sourcing and locating embryo donors
- Herd visitation selection tours
- Contracting of donors
- Complete coordination of: embryo recovery, health certification and documentation, inland assembly and international shipment insurance
- Housing and management assistance for cattle housed in the United States

www.amsgenetics.com

SALE INFORMATION

SALE METHOD

Bidding at this Online Sale can be Easy, Quick and Safe!
The sale will be held by higher offer through the Online Bull Sale website www.bull-sale.com.

CATALOG

The complete catalog and sale updates will be online on the sale website www.bull-sale.com on October 6, 2014.

CONTACT

SALE ORGANIZATION



AMS Genetics International, LLC
Tel +1 240 329-0169
Email info@amsgenetics.com
www.amsgenetics.com

CONTACT PERSONS

Steve Mower - Tel. +1 240 520-5906 - Email steve.mower@amsgenetics.com
Hendrik Albada - Tel +1 240 520-1566 - Email hendrik.albada@holsteinplaza.com
Jennifer Dingbaum - Tel +1 320 250-2412 - Email jennifer.dingbaum@holsteinplaza.com

EUROPE

Jan de Vries - Tel +31 (0)6 26250502 - Email jandevries@diamond-genetics.nl
Jan Postma - Tel +31 (0)6 42778550 - Email janpostma@diamond-genetics.nl

EXPORT & HOUSING POSSIBILITIES

Contact us for more information about transport and export of your purchased bull to the final destination.
Also we can help you with finding housing possibilities at the best semen collection centers for your bull if necessary.
Don't hesitate to contact us for more information.



1. #2 GTPI Jabir in the Breed, GTPI+2557 & PTAT+3.19

Details

Details about the bull in this package

BULL

Name	Genetic Test	ID	D.O.B.	Sire	Dam	Country
Mr Jab Lincoln	USA test	US 3123886001	14-May-2014	Coyne-Farms Jabir	EDG Lacy Cameron Lin	United States

#2 GTPI Jabir son in the Breed! (8/14)

Genomic Result

Genomic Results 08/14

Chip: 80K

USDA-CDCB GENOMIC - SIRE EVALUATIONS (08/2014)

Milk	+1446	72%R	0 Dtrs	0 Herds	100% US
Fat	+70	+0.06%			
Protein	+47	+0.01%	EFI 6.7%	GFI 7.3%	
PL	+6.7	66%R	Net Merit \$		+893
SCS	2.47	69%R	Fluid Merit \$		+837
DPR	+3.1	64%R	Cheese Merit \$		+941
HCR	+2.0		CCR		+3.8

NAAB CALVING TRAITS EVALUATIONS (08/2014)

Sire Calving Ease	7.6%	58%R	0 Obs
Daughter Calving Ease	5.6%	51%R	0 Obs
Sire Stillbirth	7.5%	53%R	0 Obs
Daughter Stillbirth	6.8%	47%R	0 Obs

USDA-CDCB / HA GENOMIC - TYPE (08/2014)

PTAT +3.19 69%R UDC +3.16 FLC +2.71 0 Dtrs 0 Herds

	-2	-1	0	1	2	
Stature						+2.61 Tall
Strength						+1.30 Strong
Body Depth						+1.44 Deep
Dairy Form						+1.80 Open Rib
Rump Angle						-0.17 High Pins
Thurl Width						+1.83 Wide
Rear Legs-Side View						+0.22 Sickle
Rear Legs-Rear View						+3.02 Straight
Foot Angle						+2.64 Steep
Feet & Legs Score						+3.07 High
F. Udder Attachment						+3.55 Strong
Rear Udder Height						+4.01 High
Rear Udder Width						+3.69 Wide
Udder Cleft						+3.16 Strong
Udder Depth						+3.42 Shallow
Front Teat Placement						+2.22 Close
Rear Teat Placement						+2.17 Close
Teat Length						+0.25 Long

GPA-LPI	+3338
DGV-LPI	+3417
Production Traits	
Milk	+1639
%Fat	+0.15
Fat (lbs)	+77
%Prot	+0.02
Prot (lbs)	+56
Management Traits	
Herd Life	116
Daughter Calving Ability	104
Somatic Cell Score	2.59
Milking Speed	104
Composites and Conf.	
Mammary System	+15
Feet & Legs	+12
Dairy Strength	+6
Rump	-2
Conformation	+15

SIRE INFORMATION

Information about the sires in this package

Coyne-Farms JABIR

(Facebook x Freddie x Ramos)

US 08/14 (77%R) +1440M +0.15% +0.03% +92F +52P NM \$ 857 / GTPI +2430

US 08/14 CE 6.1 / DCE 4.8 / PL +2.8 / SCS 2.58 / DPR +2.8 / SSB 6.9 / DSB 7.0

US 08/14 UDC +1.49 / FLC +2.51 / BD +1.62 / D +1.23 / PTAT +2.18





2nd DAM: Kellercrest Manoman Lacy VG-85



3rd DAM: Kellercrest Toystory Lady VG-87 DOM



Kellercrest Lancome

EDG Lacy Cameron Lin

Reg.no. US 72127308 D.O.B. 01-11-2012

Genomic Index US 08/14 +948M +0.09F +0.02%P NM \$ 728 **GTPI +2326**
 US 08/14 PL +6.3 / SCS 2.69 / DPR +1.4 / SCE 7.7 / DCE 6.3 / FLC +2.42 / UDC +3.06 / PTAT +3.12

Details / Progeny - No Shottle, Goldwyn or Planet in the Pedigree
 - Maternal sister to Kellercrest Lancome @ Semex
 - Tremendous Opportunity to buy Lin's highest son!

ONLINE BULL SALE
+2557G Jabir
 son from deep
 cow family!

PEDIGREE

Sheema Jeeves CAMERON

Kellercrest Manoman Lacey
 Conf. VG-85-2YR-USA

2-06 2 305d 28.830lbM 3.8% 974F 3.4% 878P

- Tremendous Brood Cow
- More than 30 offspring over +2300G!
- Multiple sons in AI

Long-Langs Oman Oman

Kellercrest Toystory Lady
 Conf. VG-87-3YR-USA DOM

2-01 2x 365d 36.760lbM 3.8% 1.407F 3.3% 1205P

Jenny-Lou Mrshl TOYSTORY

Kellercrest Lucky Lady
 Conf. VG-88-USA

4-01 2x 358d 32.700lbM 4.4% 1.439F 3.6% 1.166P
 Life: 1429d 115.350lbM 4.3% 4.952F 3.6% 4.184P

- Full Sister to: Kellercrest Titanic Lady EX-92
 Elegant & Buckeye sons in AI

Next Dams

- 4th Kellercrest Manfred Luck VG-87 GMD DOM
- 5th Kellercrest Winken Lynn VG-86 GMD DOM
- 6th Kellercrest Mark Lisa-ET
- 7th Con-Inv Lindsay VG-87 DOM
- 8th Keystone Starlet Lass EX-91 2E DOM



2. READY TO MAKE SEMEN & GTPI+2468, +3.06T, SCE+6.3

Details

Details about the bull in this package

BULL

Name	Genetic Test	NAAB	D.O.B.	Sire	Dam	Country
Snowbiz Swinger Twin	USA test	515H000180	13-June-2013	Dymentholm S Sympatico	Gen-I-Beq Snowman Summer *RC	United States

GUARANTEE

Snowbiz Swinger Twin has one testicle. 25% down payment will be requested before delivery of the bull to its final destination. This down payment is not refundable. The remaining 75% will be invoiced at the moment the bull has produced 10,000 doses. This needs to be accomplished before the bull reaches the age of 30 months. If the bull does not meet this criteria the second payment will not come in place.

Genomic Result

Interbull ID: CANM000108502550
NAAB: 515H000180

Date of Birth: 6/13/2013
Genetic Recessive:
Inbreeding Coef: 20.9

Production Traits: G

% Rel.	Milk Lbs.	% Fat	Fat Lbs.	% Prot.	Prot. Lbs.	NMS	FMS	CMS	Total Dtrs	Total Hrds	% US Dtrs	Gen. Base
74	1733	0.07	82	0.02	58	818	785	860	0	0	100	USA-D, 8/2014

Management Traits: G

Trait	Rating	Reliability
Calving Ease	6.3	60%
M. Calving Ease	4.7	52%
Prod Life	5.5	67%
S.cell Score	2.8	70%
Dtr PG Rate	0.9	65%
Sire StillBirth	6.7	55%
Dtr StillBirth	6.9	48%

Type Information, HA-, 8/2014 :

TPI	2468	PTAT	3.06
Reliability	Daughters	Herds	
73%	0	0	

Pedigree:

Sire	DYMETHOLM SUNVIEW SYMPATICO
MGS	FLEVO GENETICS SNOWMAN
PGS	
Dam	106807371

Codes:

aAa
DMS

Linear Traits:

Trait	Profile	Score
Udder Comp.		2.98
F & L Comp.		2.81
Body Comp.		1.59
Dairy Comp.		1.55
Stature		2.12
Strength		1.09
Body Depth		0.65
Dairy Form		1.23
Rump Angle		1.03
Thurl Width		1.60
R. Legs Side View		-0.69
R. Legs Rear View		2.88
Foot Angle		2.89
Feet & Legs		3.07
F. Udder Att.		3.57
R. Udder Ht.		4.73
R. Udder Width		4.35
Udder Cleft		1.69
Udder Depth		2.63
F. Teat Place.		1.32
R. Teat Place.		0.84
Teat Length		1.30
HA-, 8/2014	-2 -1 0 +1 +2	

SIRE INFORMATION

Information about the sires in this package

Dymentholm S Sympatico *RC
(Snowman x Planet x Bolton)

US 08/14 (77%R) +2035M +0.04% -0.01% +83F +58P NM \$ 702 / GTPI +2276
US 08/14 CE 6.6 / DCE 5.4 / PL +4.2 / SCS 2.83 / DPR -0.4 / SSB 6.2 / DSB 7.2
US 08/14 UDC +2.16 / FLC +1.97 / BC +1.18 / DC +1.57 / PTAT +2.66





Full sister: Snowbiz Sympatico Sofia-Red



Maternal sister: Snowbiz Ladd Sunshine P RC

DAM: Gen-I-Beq Snowman Summer *RC I Tremendous Transmitter!

Gen-I-Beq Snowman Summer *RC

Reg.no. CAN 106807371 **D.O.B.** 15-June-2011
Classification Very Good-85-2YR-CAN VG-MS
Production 2-01 2x 358d 30.199lbM 3.5% 1052F 3.1% 935P
Genomic Index US 09/14 +1993M +71F +59P NM \$ 617 **GTPI +2281**
 US 09/14 PL +3.2 / SCS 2.99 / DPR +0.1 / SCE 6.7 / DCE 4.9
 US 09/14 FLC +2.38 / UDC +3.18 / PTAT +2.93

Details / Progeny - **Fantastic Transmitter!**
 - **Great combination of Production, Fertility, Productive Life & with Great Type!**

ONLINE BULL SALE
 +2468G Son
 SELLS Ready to
 make Semen!

PEDIGREE

Flevo Genetics SNOWMAN

Gen-I-Beq Bolton Secretly
 Conf. VG-87-CAN 89-MS

2-01 2x 365d 30.474lbM 4.4% 1.327F 3.4% 1.043P

Sandy-Valley BOLTON

Gen-I-Beq Goldwyn Secret *RC
 Conf. VG-87-CAN-2YR 89-MS

2-00 2x 365d 25.593lbM 4.8% 1.237F 3.6% 917P
 5-05 2x 365d 30.573lbM 4.5% 1.389F 3.4% 1.038P

- Global R&W Cow of the Year 2011
- Dam to Secure @ Generations, Mr Savage @ Taurus
- Sold for \$160,000 at Gen-I-Beq Sale 2007
- Voted Red Impact Cow of the Year 2011

Braedale Goldwyn

Gen-I-Beq Durham Sherry
 Conf. VG-87-CAN

2-05 365d 30.214lbM 4.0% 1.215F 3.4% 1.021P
 5-02 365d 40.036lbM 3.9% 1.574F 3.2% 1.268P

Next Dams

- 4th Glen Drummond Splendor VG-86-2YR-CAN
- 5th Glen Drummond Aero Flower VG-88-CAN
- 6th Glen Drummond Shower EX-90-CAN
- 7th Glen Drummond S C Jo Beth EX-90-CAN 2E
- 8th Glen Drummond Math Beth VG-85-CAN
- 9th Glen Drummond Marquis Beth VG-CAN
- 10th Ferglynn Rag Apple Berth VG-CAN



3. New International Sire of Sons! GTPI+2507, PTAT+3.53

Details

Details about the bull in this package

BULL

Name	Genetic Test	ID	D.O.B.	Sire	Dam	Country
Mr EDG Armana Def 18196 *RC	USA test	US 3125201960	12-June-2014	S-S-I Mogul Defender	Ms Apples Uno Armana	United States

#2 GTPI Red Carrier in the Breed! (8/14)

Genomic Result

Genomic Results 08/14

Chip: 80K

USDA-CDCB GENOMIC - SIRE EVALUATIONS (08/2014)

Milk	+976	72%R	0 Dtrs	0 Herds	100% US
Fat	+68	+0.13%			
Protein	+48	+0.07%	EFI 6.1%	GFI 7.2%	
PL	+6.2	66%R	Net Merit \$		+826
SCS	2.66	69%R	Fluid Merit \$		+737
DPR	+1.5	64%R	Cheese Merit \$		+923
HCR	+2.3		CCR		+1.4

NAAB CALVING TRAITS EVALUATIONS (08/2014)

Sire Calving Ease	7.3%	58%R	0 Obs
Daughter Calving Ease	4.9%	51%R	0 Obs
Sire Stillbirth	8.5%	52%R	0 Obs
Daughter Stillbirth	6.2%	48%R	0 Obs

USDA-CDCB / HA GENOMIC - TYPE (08/2014) TPI +2507

	PTAT +3.53	70%R	UDC +3.52	FLC +3.13	0 Dtrs	0 Herds	
Stature	-2	-1	0	1	2	+2.19	Tall
Strength						+0.64	Strong
Body Depth						+0.91	Deep
Dairy Form						+1.81	Open Rib
Rump Angle						-0.12	High Pins
Thurl Width						+1.22	Wide
Rear Legs-Side View						-0.77	Posty
Rear Legs-Rear View						+3.16	Straight
Foot Angle						+3.11	Steep
Feet & Legs Score						+3.49	High
F. Udder Attachment						+4.20	Strong
Rear Udder Height						+4.81	High
Rear Udder Width						+4.43	Wide
Udder Cleft						+2.78	Strong
Udder Depth						+3.61	Shallow
Front Teat Placement						+2.78	Close
Rear Teat Placement						+2.55	Close
Teat Length						-1.12	Short

GPA-LPI	+3328
DGV-LPI	+3449
Production Traits	
Milk	+805
%Fat	+0.41
Fat (lbs)	+72
%Prot	+0.21
Prot (lbs)	+49
Management Traits	
Herd Life	117
Daughter Calving Ability	105
Somatic Cell Score	2.65
Milking Speed	110
Composites and Conf.	
Mammary System	+18
Feet & Legs	+15
Dairy Strength	+4
Rump	+4
Conformation	+17

SIRE INFORMATION

Information about the sires in this package

S-S-I Mogul DEFENDER

(Mogul x Man 0 Man x Shottle)

US 08/14 (76%R) +1128M +0.08% +0.05% +65F +49P NM \$ 766 / GTPI +2433
 US 08/14 CE 6.0 / DCE 5.6 / PL +4.8 / SCS 2.60 / DPR +0.4 / SSB 6.8 / DSB 6.4
 US 08/14 UDC +3.68 / FLC +3.42 / BC +1.79 / DC +1.57 / PTAT +3.36





2nd DAM: KHW Regiment Apple-Red EX-96 DOM



DAM: Ms Apples Uno Armana *RC



3rd DAM: Kamps-Hollow Altitude *RC EX-95

Ms Apples Uno Armana *RC *TV

Reg.no. US 72227621 D.O.B. 30-October-2012

Genomic Index
 US 08/14 +168M +68F +32P NM \$ 714 **GTPI +2379**
 US 08/14 PL +5.9 / SCS 2.76 / DPR +2.1 / SCE 8.5 / DCE 6.1
 US 08/14 FLC +2.69 / UDC +3.22 / PTAT +3.53

Details / Progeny
 - APPLES highest daughter on GTPI & GLPI
 - Fantastic Health Tratis!
 - Her Defender son is one of the highest Red Carrier sires in the Breed

ONLINE BULL SALE
New International Sire of Sons Sells!

PEDIGREE

Amighetti NUMERO UNO

KHW Regiment Apple-Red
 Conf. EX-96-USA DOM

2-02 2x 365d 28.930lbM 4.5% 1.297F 3.6% 1.033P
 4-01 2x 365d 35.750lbM 4.7% 1.682F 3.7% 1.314P
 Life: 1972d 158.682lbM 4.8% 7.683F 3.8% 6.034P

- Res. Grand Champion R&W WDE 2013
- Grand Champion R&W WDE 2011
- All-American R&W Aged Cow 2011
- World Champion R&W Cow (HI) 2010
- Res. Grand Champion RWF 2009
- Several sons in AI

Carrousel REGIMENT-RED

Kamps-Hollow Altitude *RC
 Conf. EX-95-USA 2E DOM

7-00 2x 365d 39.690lbM 4.7% 1.849F 3.5% 1.385P
 Life: 1844d 144.460lbM 4.4% 6.295F 3.7% 5.288P

- Red Impact Cow of the Year 2009
- Wisconsin Cow of the Year 2009
- Dam to Advent, Jotan & Acme *RC

Regancrest Elton DURHAM

Clover-Mist Alisha
 Conf. EX-93-USA 3E DOM

5-03 365d 34.670lbM 4.8% 1.653F 3.5% 1.219P
 8-07 365d 36.921lbM 4.2% 1.552F 3.4% 1.259
 Life: 226.472lbM 4.7%F 3.6%P

Next Dams

- 4th Clover-Mist Augy Star EX-94-USA 4E DOM
- 5th D-R-A August EX-96-USA 4E DOM
- 6th D-R-A Ideal Precious Leader EX-90-USA 2E
- 7th D-R-A Princess Lad Leader EX-90-USA 3E



4. PTAM+2273, +63lbs. Prot & DPR+1.2 & Unique Pedigree

Details

Details about the bull in this package

BULL

Name	Genetic Test	ID	D.O.B.	Sire	Dam	Country
Mr Tarina Coin 57557	USA test	US 3010356304	19-January-2014	Farnear-TBR-BH Cashcoin	Ms Welcome Uno Tarina	United States

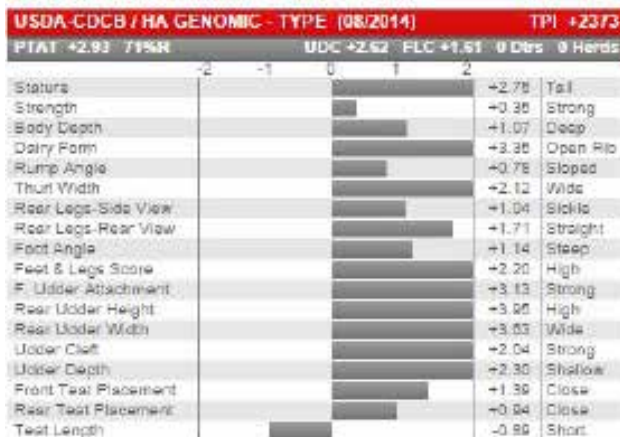
Genomic Result

Genomic Results 08/14

Chip: 80K

USDA-CDCB GENOMIC - SIRE EVALUATIONS (08/2014)					
Milk	+2273	72%R	0 Dtrs	0 Herds	100% US
Fat	+70	-0.05%			
Protein	+63	-0.02%	EFI 8.8%	GFI 7.2%	
PL	+4.0	66%R	Net Merit \$	+729	
SCS	2.83	68%R	Fluid Merit \$	+740	
DPR	+1.2	64%R	Cheese Merit \$	+723	
HCR	+3.2		CCR	+3.2	

NAAB CALVING TRAITS EVALUATIONS (08/2014)			
Sire Calving Ease	8.4%	59%R	0 Obs
Daughter Calving Ease	4.2%	51%R	0 Obs
Sire Stillbirth	7.0%	54%R	0 Obs
Daughter Stillbirth	5.4%	48%R	0 Obs



SIRE INFORMATION

Information about the sires in this package

Farnear-TBR-BH CASHCOIN

(Observer x Goldwyn x Shottle)

US 08/14 (77%R) +1197M +0.06% +0.02% +60F +42P NM \$ 772 / GTPI +2306

US 08/14 CE 6.1 / DCE 5.0 / PL +6.4 / SCS 2.64 / DPR +1.4 / SSB 6.2 / DSB 6.9

US 08/14 UDC +2.92 / FLC +0.67 / BC +0.45 / DC +1.16 / PTAT +2.66





2nd DAM: Ms Welcome Colby Taya VG-88 DOM | Dam to Tango @ Genex



Sister to DAM: Ms Welcome Iota Tacey VG-88



DAM: Ms Welcome Uno Tarina

Ms Welcome Uno Tarina

Reg.no. US 3009276290 **D.O.B.** 17-July-2012

Genomic Index US 08/14 +1810M +88F +58P NM \$ 758 **GTPI +2431**
 US 08/14 PL +3.6 / SCS 2.73 / DPR +1.6 / SCE 8.3 / DCE 5.3
 US 08/14 FLC +2.69 / UDC +2.40 / PTAT +3.14

Details / Progeny

- Beautiful Numero Uno heifer out of a Tremendous Outcross Source!
- Tremendous Transmitter
- Her PTAM+2273, DPR+1.2 Cashcoin son Sells!

ONLINE BULL SALE
PTAM+2273 & DPR+1.2 Cashcoin son sells!

PEDIGREE

Amighetti NUMERO UNO

Ms Welcome Colby Taya
 Conf. VG-88-USA DOM

1-10 365d 41.237lbsM 3.3% 1.357F 3.2% 1.333P

- Dam of Mr Welcome Hill Tango @ Genex/CRI
- Tremendous Brood Cow
- OUTCROSS

Solid-Gold COLBY

Clear-Echo FBI 1461
 Conf. EX-90-USA EX-MS

2-00 365d 36.230lbsM 3.5% 1.261F 2.9% 1.053P

- 1 Excellent & 4 VG daughters in the USA to date

Gillette Brilea FBI

Clear-Echo 2635 Bol 1204
 Conf. VG-88-USA DOM

6.05 365d 18.058kgM 4.1% 794F 3.5% 615P
 9.00 365d 21.981kgM 4.0% 881F 3.4% 748P

Next Dams

- 4th Clear-Echo Addisn Thea 635 VG-85 GMD DOM
- 5th Clear-Echo Matt Thea 380 GP-83
- 6th Clear-Echo Lake Thea EX-90
- 7th Caernarvon Thor Shea EX-90
- 8th Cabin-Run Mark Star VG-86 GMD DOM
- 9th Gay-Ridge Spirit Stacey VG-86 GMD DOM



5. Larcrest Cayson... Exciting Allrounder!

Details

Details about the bull in this package

BULL

Name	Genetic Test	ID	D.O.B.	Sire	Dam	Country
Larcrest Cayson	USA test	US 74007814	23-June-2014	Bacon-Hill Montross	Larcrest Clairen	United States

Genomic Result

Genomic Results 08/14

Chip: 9K

USDA-CDCB GENOMIC - SIRE EVALUATIONS (08/2014)

Milk	+1720	73%R	0 Dtrs	0 Herds	100% US
Fat	+78	+0.06%			
Protein	+60	+0.03%	EFI 6.6%	GFI 7.7%	
PL	+3.7	67%R	Net Merit \$		+732
SCS	2.86	69%R	Fluid Merit \$		+697
DPR	+1.4	65%R	Cheese Merit \$		+780
HCR	+1.4		CCR		+1.6

NAAB CALVING TRAITS EVALUATIONS (08/2014)

Sire Calving Ease	8.2%	54%R	0 Obs
Daughter Calving Ease	5.3%	52%R	0 Obs
Sire Stillbirth	6.9%	50%R	0 Obs
Daughter Stillbirth	5.0%	48%R	0 Obs

USDA-CDCB / HA GENOMIC - TYPE (08/2014) TPI +2423

	PTAT +3.36	71%R	UDC +2.61	FLC +2.62	0 Dtrs	0 Herds
Stature	-2	-1	0	1	2	+2.32 Tail
Strength						+2.35 Strong
Body Depth						+2.18 Deep
Dairy Form						+1.68 Open Rib
Rump Angle						+0.84 Sloped
Thurl Width						+1.99 Wide
Rear Legs-Side View						-0.84 Posty
Rear Legs-Rear View						+2.77 Straight
Foot Angle						+2.70 Steep
Feet & Legs Score						+2.80 High
F. Udder Attachment						+3.33 Strong
Rear Udder Height						+4.09 High
Rear Udder Width						+3.78 Wide
Udder Cleft						+2.05 Strong
Udder Depth						+2.09 Shallow
Front Teat Placement						+2.39 Close
Rear Teat Placement						+1.88 Close
Teat Length						-0.54 Short

SIRE INFORMATION

Information about the sires in this package

Bacon-Hill MONTROSS

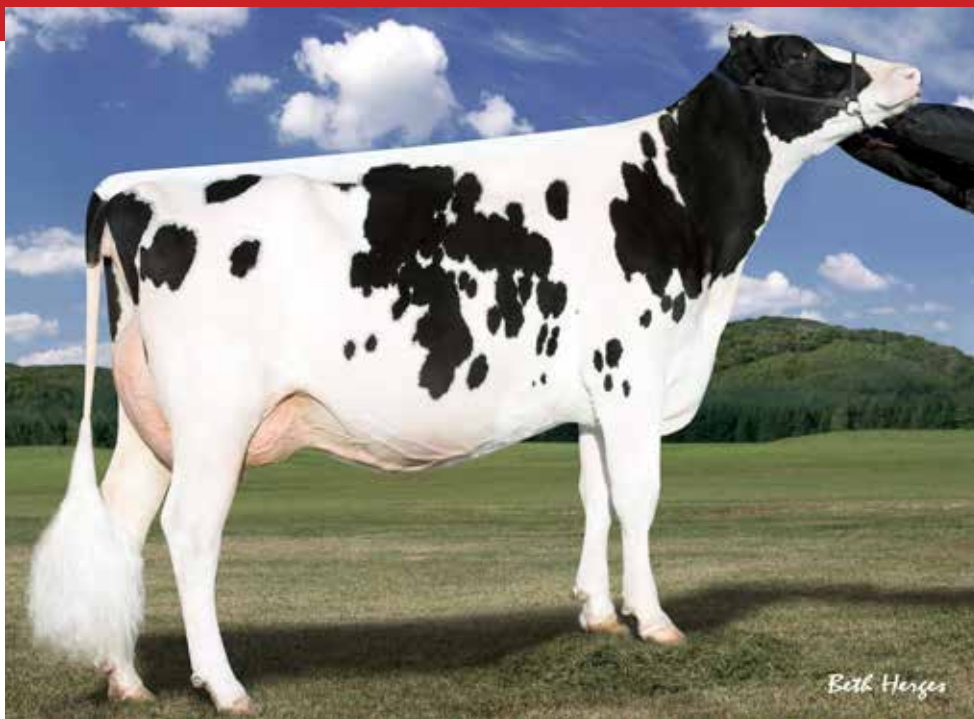
(Mogul x Bolton x Rolex)

US 08/14 (73%R) +2835M -0.03%F -0.01%P +95F +83P NM \$877 / GTPI +2541

US 08/14 CE 8.1 / DCE 5.9 / PL +4.6 / SCS 2.81 / DPR +0.3 / SSB 7.5 / DSB 6.7

US 08/14 UDC +2.45 / FLC +2.85 / BC +1.15 / DC +1.87 / PTAT 3.01





Maternal Sister to DAM: Larcrest Crimson EX-92 GMD DOM



2nd DAM: Larcrest Cosmopolitan VG-87



DAM: Larcrest Clairen VG-85-2YR

Larcrest Clairen VG-85-2YR-USA

ONLINE BULL SALE
**Exciting
 Allrounder from
 the Cosmos**

Reg.no. US 57187387 **D.O.B.** 19-December-2011
Classification Very Good-85-2YR VG-MS
Production 1-03 2x 158d 15.688lbM 3.8% 596F 3.2% 501P inc.
Genomic Index US 08/14 +1087M +79F +48P NM \$ 588 GTPI +2269
 US 08/14 PL +1.5 / SCS 2.84 / DPR +1.2 / SCE 7.7 / DCE 5.3
 US 08/14 FLC +1.86 / UDC +2.49 / PTAT +3.28

Details / Progeny - Iota daughter straight out of Larcrest Cosmopolitan!
 - Her Allround & EARLY Montross son sells, Milk, DPR and Tremendous Type!

PEDIGREE

Regancrest altaIOTA

Larcrest Cosmopolitan
 Conf. VG-87 GMD DOM

2-04 2x 365d 30.930lbM 4.1% 1.261F 3.6% 1.119P

- Dam of Cancun, Contrast, O-Cosmopolitan and more!
- Tremendous Brood Cow!

Picston SHOTTLE

Larcrest Oside Champagne
 Conf. EX-90 EX-MS GMD DOM

2-03 2x 365d 29.110lbM 4.5% 1.322F 3.7% 1.077P
 6-00 2x 365d 26.270lbM 4.9% 1.290F 3.4% 889P

- 17 sons in AI

Comestar OUTSIDE

Larcrest Juror Chanel
 Conf. EX-93 3E GMD DOM

3-07 305d 27.981lbM 4.3% 1.206F 3.5% 977P
 5-01 365d 41.200lbM 4.2% 1.750F 3.3% 1.356P
 9-00 365d 48.460lbM 4.0% 1.942F 3.4% 1.649P

Next Dams

4th Larcrest Lindy Chandra VG-85-USA
 5th Larcrest Inspiration Carly VG-87-USA



6. FROM THE BREEDING POWERHOUSE UNO TARINA

Details

Details about the pregnancies in this package

Pregnancies

Sire	Dam	# of pregnancies	Due Date	Country
Bacon-Hill Montross	Ms Welcome Uno Tarina	4 Male Pregnancies	March 2015	United States

Guarantee

At least 2 bulls to choose from. See Terms & Conditions article 8.7

Genomic Parent Average 08/14 of the mating

Sire	Index Base	PTPI	Lbs Milk	Lbs Fat	Lbs Prt	PTAT	FLC	UDC	DPR	PL	SCS	SCE
Bacon-Hill MONTROSS	US 08/14	+2490	+2323	+92	+71	+3.08	+2.77	+2.43	+1.0	+4.1	2.77	8.2

SIRE INFORMATION

Information about the sires in this package

Bacon-Hill MONTROSS

(Mogul x Bolton x Rolex)

US 08/14 (73%R) +2835M -0.03%F -0.01%P +95F +83P NM \$877 / GTPI +2541

US 08/14 CE 8.1 / DCE 5.9 / PL +4.6 / SCS 2.81 / DPR +0.3 / SSB 7.5 / DSB 6.7

US 08/14 UDC +2.45 / FLC +2.85 / BC +1.15 / DC +1.87 / PTAT 3.01





2nd DAM: Ms Welcome Colby Taya VG-88 DOM | Dam to Tango @ Genex



Sister to DAM: Ms Welcome Iota Tacey VG-88



DAM: Ms Welcome Uno Tarina

Ms Welcome Uno Tarina

Reg.no. US 3009276290 D.O.B. 17-July-2012

Genomic Index US 08/14 +1810M +88F +58P NM \$ 758 **GTPI +2431**
 US 08/14 PL +3.6 / SCS 2.73 / DPR +1.6 / SCE 8.3 / DCE 5.3
 US 08/14 FLC +2.69 / UDC +2.40 / PTAT +3.14

Details / Progeny - Beautiful Numero Uno heifer out of a Tremendous Outcross Source!
 - 9 sons over +2400G (8/14) including a Camaro at +2564G and a Embassy at +2519G
 - Several high daughters up to +2565G (#1 GTPI Mardi Gras in the Breed)!

ONLINE BULL SALE
First Choice from TANGO's sister!

PEDIGREE

Amighetti NUMERO UNO

Ms Welcome Colby Taya
 Conf. VG-88-USA DOM

1-10 365d 41.237lbsM 3.3% 1.357F 3.2% 1.333P

- Dam of Mr Welcome Hill Tango @ Genex/CRI
- Tremendous Brood Cow
- OUTCROSS

Solid-Gold COLBY

Clear-Echo FBI 1461
 Conf. EX-90-USA EX-MS

2-00 365d 36.230lbsM 3.5% 1.261F 2.9% 1.053P

- 1 Excellent & 4 VG daughters in the USA to date

Gillette Brilea FBI

Clear-Echo 2635 Bol 1204
 Conf. VG-88-USA DOM

6.05 365d 18.058kgM 4.1% 794F 3.5% 615P
 9.00 365d 21.981kgM 4.0% 881F 3.4% 748P

Next Dams

- 4th Clear-Echo Addisn Thea 635 VG-85 GMD DOM
- 5th Clear-Echo Matt Thea 380 GP-83
- 6th Clear-Echo Lake Thea EX-90
- 7th Caernarvon Thor Shea EX-90
- 8th Cabin-Run Mark Star VG-86 GMD DOM
- 9th Gay-Ridge Spirit Stacey VG-86 GMD DOM



7. GTPI+2523, PTAM+2025, Type, Fitness in One Package!

Details

Details about the bull in this package

BULL

Name	Genetic Test	ID	D.O.B.	Sire	Dam	Country
IHG Valour 55740	USA test	US 3010354487	25-June-2014	S-S-I Mogul Defender	Farnear-TBH-BH Valour	United States

#2 GTPI Defender son in the Breed! (8/14)

Genomic Result

Genomic Results 08/14

Chip: 80K

USDA-CDCB GENOMIC - SIRE EVALUATIONS (08/2014)

Milk	+2025	72%R	0 Dtrs	0 Herds	100% US
Fat	+77	+0.01%			
Protein	+68	+0.02%	EFI 6.8%	GFI 7.8%	
PL	+5.1	66%R	Net Merit \$	+806	
SCS	2.80	69%R	Fluid Merit \$	+772	
DPR	+0.6	64%R	Cheese Merit \$	+852	
HCR	+2.0		CCR	+2.0	

NAAB CALVING TRAITS EVALUATIONS (08/2014)

Sire Calving Ease	7.5%	58%R	0 Obs
Daughter Calving Ease	5.3%	51%R	0 Obs
Sire Stillbirth	7.2%	52%R	0 Obs
Daughter Stillbirth	5.4%	48%R	0 Obs

USDA-CDCB / HA GENOMIC - TYPE (08/2014) TPI +2523

PTAT +3.49 70%R UDC +3.23 FLC +2.94 0 Dtrs 0 Herds

Stature	+2.90	Tall
Strength	+1.49	Strong
Body Depth	+1.51	Deep
Dairy Form	+2.08	Open Rib
Rump Angle	+0.29	Sloped
Thurl Width	+2.11	Wide
Rear Legs-Side View	-0.27	Posty
Rear Legs-Rear View	+2.92	Straight
Foot Angle	+3.01	Steep
Feet & Legs Score	+3.31	High
F. Udder Attachment	+3.89	Strong
Rear Udder Height	+4.51	High
Rear Udder Width	+4.15	Wide
Udder Cleft	+2.06	Strong
Udder Depth	+3.34	Shallow
Front Teat Placement	+0.87	Close
Rear Teat Placement	+0.88	Close
Teat Length	+0.09	Long

GPA-LPI	+3395
DGV-LPI	+3535
Production Traits	
Milk	+2018
%Fat	+0.12
Fat (lbs)	+88
%Prot	+0.07
Prot (lbs)	+75
Management Traits	
Herd Life	113
Daughter Calving Ability	106
Somatic Cell Score	2.80
Milking Speed	108
Composites and Conf.	
Mammary System	+13
Feet & Legs	+12
Dairy Strength	+8
Rump	+6
Conformation	+15

SIRE INFORMATION

Information about the sires in this package

S-S-I Mogul DEFENDER

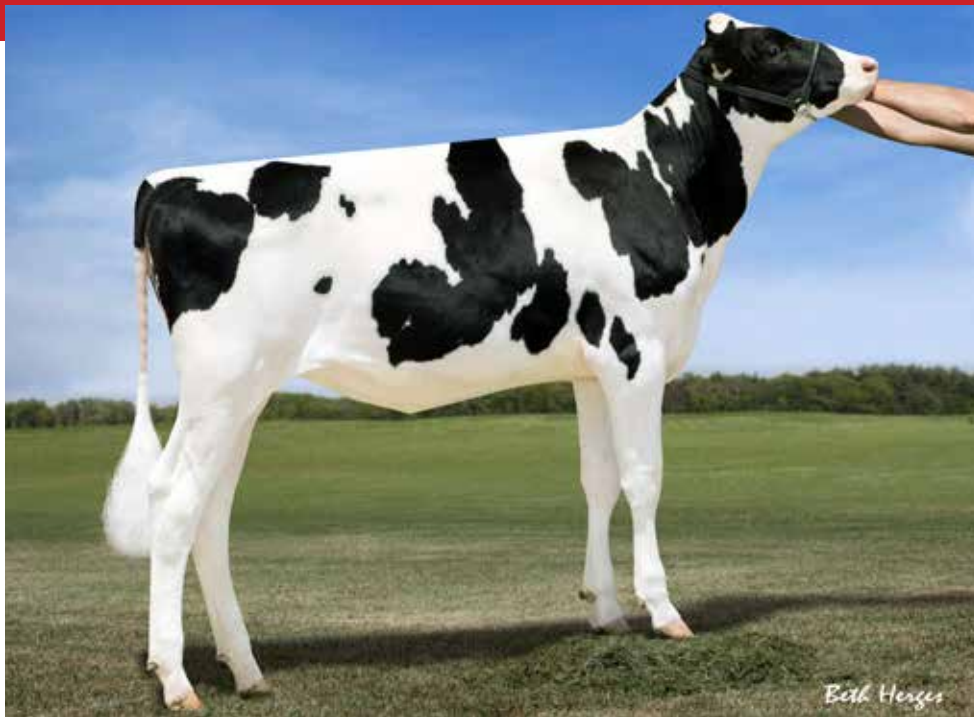
(Mogul x Man O Man x Shottle)

US 08/14 (76%R) +1128M +0.08% +0.05% +65F +49P NM \$ 766 / GTPI +2433

US 08/14 CE 6.0 / DCE 5.6 / PL +4.8 / SCS 2.60 / DPR +0.4 / SSB 6.8 / DSB 6.4

US 08/14 UDC +3.68 / FLC +3.42 / BC +1.79 / DC +1.57 / PTAT +3.36





DAM: Farnear-TBR-BH Valour



2nd DAM: Vision-Gen Sh Sho A12037 VG-87-2YR



4th DAM: Ms Kingstead Chief Adeen

Farnear-TBR-BH Valour

Reg.no. US 71290939 D.O.B. 01-December-2012

Genomic Index US 08/14 +1620M +64F +57P NM \$ 664 **GTPI +2274**
 US 08/14 PL +4.2 / SCS 2.86 / DPR +0.4 / SCE 6.9 / DCE 5.7
 US 08/14 FLC +1.82 / UDC +2.42 / PTAT +2.82

Details / Progeny - Beautiful Supersire daughter that is backed by the ADEENS!
 - Complete Package: Index, (Show-)Type, Fitness, Pedigree and a Top-Ranking GTPI!
 - #2 GTPI Defender son in the Breed!

ONLINE BULL SALE
**GTPI+2523 from
 the tremendous
 ADEENS!**

PEDIGREE

Seagull-Bay SUPERSIRE

Vision-Gen Sh Sho A12037
 Conf. VG-87-2YR-USA

2-02 305d 26.486lbM 3.7% 981F 3.4% 899P

• Close family to Atwood, Golden Dreams, Aftershock and more!

Picston SHOTTLE

Ky-Blue GW Dana
 Conf. EX-91-4YR-USA

4-01 2x 185d 16.881lbM 4.5% 765F 3.2% 540P

• 4th Generation Excellent

Braedale Goldwyn

BVK Outside Diana
 Conf. EX-92-USA 2E DOM

2-05 365d 20.820lbM 3.5% 725F 3.3% 697P
 3-08 365d 27.631lbM 3.4% 933F 3.4% 944P
 5-01 365d 31.921lbM 3.5% 1.129F 3.2% 1.034P

• Maternal sister to MD-Delight Durham Atlee EX-92

Next Dams

4th Ms Kingstead Chief Adeen EX-94-USA 2E DOM
 5th Aitkenbrae Starbuck Ada EX-94-USA 2E DOM



8. Allrounder with Huge Fitness Traits from the TAYAs

Details

Details about the bull in this package

BULL

Name	Genetic Test	ID	D.O.B.	Sire	Dam	Country
Mr M G Torpedo	USA test	US 3125202117	04-July-2014	Mr Moviestar Mardi Gras	Ms Welcome Uno Tarina	United States

Genomic Result

Genomic Results 08/14

Chip: 80K

USDA-CDCB GENOMIC - SIRE EVALUATIONS (08/2014)

Milk	+1728	72%R	0 Dtrs	0 Herds	100% US
Fat	+72	+0.03%			
Protein	+59	+0.03%	EFI %		GFI 7.6%
PL	+6.5	66%R	Net Merit \$		+873
SCS	2.68	69%R	Fluid Merit \$		+827
DPR	+2.7	64%R	Cheese Merit \$		+923
HCR	+2.8		CCR		+4.2

NAAB CALVING TRAITS EVALUATIONS (08/2014)

Sire Calving Ease	6.7%	53%R	0 Obs
Daughter Calving Ease	4.8%	50%R	0 Obs
Sire Stillbirth	7.3%	49%R	0 Obs
Daughter Stillbirth	6.0%	47%R	0 Obs

USDA-CDCB / HA GENOMIC - TYPE (08/2014) TPI +2463

PTAT +2.36 70%R	UDC +2.14	FLC +1.93	0 Dtrs	0 Herds
Stature	+0.99	Tall		
Strength	+0.45	Strong		
Body Depth	+0.31	Deep		
Dairy Form	+0.91	Open Rib		
Rump Angle	+1.21	Sloped		
Thurl Width	+1.08	Wide		
Rear Legs-Side View	-1.66	Posty		
Rear Legs-Rear View	+1.65	Straight		
Foot Angle	+1.92	Steep		
Feet & Legs Score	+2.08	High		
F. Udder Attachment	+2.50	Strong		
Rear Udder Height	+3.88	High		
Rear Udder Width	+3.57	Wide		
Udder Cleft	+1.22	Strong		
Udder Depth	+1.80	Shallow		
Front Teat Placement	+0.40	Close		
Rear Teat Placement	+0.02	Close		
Teat Length	-0.07	Short		

SIRE INFORMATION

Information about the sires in this package

Mr Moviestar Mardi Gras
(Mogul x Planet x Shottle)

US 08/14 (75%R) +1277M +0.13% +0.05% +80F +51P NM \$ 861 / GTPI +2480
 US 08/14 CE 6.6 / DCE 5.4 / PL +6.6 / SCS 2.82 / DPR +2.5 / SSB 7.7 / DSB 6.7
 US 08/14 UDC +3.07 / FLC +1.71 / BC +1.15 / DC +1.18 / PTAT +2.83





2nd DAM: Ms Welcome Colby Taya VG-88 DOM | Dam to Tango @ Genex



Sister to DAM: Ms Welcome Iota Tacey VG-88



DAM: Ms Welcome Uno Tarina

Ms Welcome Uno Tarina

Reg.no. US 3009276290 **D.O.B.** 17-July-2012

Genomic Index US 08/14 +1810M +88F +58P NM \$ 758 **GTPI +2431**
 US 08/14 PL +3.6 / SCS 2.73 / DPR +1.6 / SCE 8.3 / DCE 5.3
 US 08/14 FLC +2.69 / UDC +2.40 / PTAT +3.14



Details / Progeny

- Beautiful Numero Uno heifer out of a Tremendous Outcross Source!
- Tremendous Transmitter
- Her Modern Mardi Gras son sells! He meets the demands of commercial dairy farmers!

PEDIGREE

Amighetti NUMERO UNO

Ms Welcome Colby Taya
 Conf. VG-88-USA DOM

1-10 365d 41.237lbsM 3.3% 1.357F 3.2% 1.333P

- Dam of Mr Welcome Hill Tango @ Genex/CRI
- Tremendous Brood Cow
- OUTCROSS

Solid-Gold COLBY

Clear-Echo FBI 1461
 Conf. EX-90-USA EX-MS

2-00 365d 36.230lbsM 3.5% 1.261F 2.9% 1.053P

- 1 Excellent & 4 VG daughters in the USA to date

Gillette Brilea FBI

Clear-Echo 2635 Bol 1204
 Conf. VG-88-USA DOM

6.05 365d 18.058kgM 4.1% 794F 3.5% 615P
 9.00 365d 21.981kgM 4.0% 881F 3.4% 748P

Next Dams

- 4th Clear-Echo Addisn Thea 635 VG-85 GMD DOM
- 5th Clear-Echo Matt Thea 380 GP-83
- 6th Clear-Echo Lake Thea EX-90
- 7th Caernarvon Thor Shea EX-90
- 8th Cabin-Run Mark Star VG-86 GMD DOM
- 9th Gay-Ridge Spirit Stacey VG-86 GMD DOM



9. Future CHART-TOPPING RED / RED CARRIER!

Details

Details about the pregnancies in this package

Pregnancies

Sire	Dam	# of pregnancies	Due Date	Country
Cogent Supershot	Snowbiz Sympatico Sofia	3 Male Pregnancies	April 2015	United States
Texel Beauty Debutant	Snowbiz Sympatico Sofia	First 2 Pregnancies	June 2015	United States

Guarantee (UPDATED)

At least 3 bulls to choose from. See Terms & Conditions article 8.7

Genomic Parent Average 08/14 of the mating

Sire	Index Base	PTPI	Lbs Milk	Lbs Fat	Lbs Prt	PTAT	FLC	UDC	DPR	PL	SCS	SCE
Cogent Supershot	US 08/14	+2575	+2343	+91	+78	+2.85	+2.37	+2.21	+1.1	+6.1	2.73	5.9%
Sire	Index Base	PTPI	Lbs Milk	Lbs Fat	Lbs Prt	PTAT	FLC	UDC	DPR	PL	SCS	SCE
Texel Beauty Debutant	US 08/14	+2346	+1601	+68	+61	+2.60	+2.28	+2.23	+1.3	+4.2	2.80	6.5%

SIRE INFORMATION

Information about the sires in this package

Cogent SUPERSHOT

(Supersire x Superstition x Shottle)

US 08/14 (73%R) +2503M +0.02%F +0.03%P +96F +84P NM \$1038 / GTPI +2616

US 08/14 CE 6.3 / DCE 4.3 / PL +7.3 / SCS 2.69 / DPR +2.1 / SSB 7.0 / DSB 4.8

US 08/14 UDC +1.66 / FLC +1.56 / BC +1.06 / DC +1.55 / PTAT 2.20

DE 08/14 +2047M -0.04%F +0.04%P +80F +74P RZM 143 / RZG 161

DE 08/14 RZS 114 / RZN 139 / RZR 111 / RZE 126

Texel Beauty DEBUTANT-RED

(Dakker x Superstition x Goldwyn)

US 08/14 (74%R) +1020M +0.05%F +0.07%P +50F +50P NM \$592 / GTPI +2157

US 08/14 CE 7.4 / DCE 5.8 / PL +3.5 / SCS 2.83 / DPR +2.4 / SSB 7.6 / DSB 6.7

US 08/14 UDC +1.70 / FLC +1.38 / BC +1.39 / DC +0.91 / PTAT 1.69

DE 08/14 +1898M -0.13%F +0.06%P +66F +71P RZM 137 / RZG 155

DE 08/14 RZS 114 / RZN 127 / RZR 121 / RZE 126





DAM: Snowbiz Sympatico Sofia-Red



2nd DAM: Gen-I-Beg Snowman Summer *RC



Maternal sister to DAM: Snowbiz Ladd Sunshine P RC

Snowbiz Sympatico Sofia-Red

Reg.no. CAN 108502624 D.O.B. 11-July-2013

Genomic Index US 09/14 +2187M +86F +71P NM \$ 841 **GTPI +2526**
 US 09/14 PL +4.8 / SCS 2.77 / DPR +0.1 / SCE 5.6 / FLC +2.76 / UDC +3.18 / PTAT +3.50
 DE 08/14 +2821M -0.17%F -0.06%P +100F +89P RZM 152 / RZG 161
 DE 08/14 RZS 111 / RZN 126 / RZR 88 / RZE 139
 CA 08/14 +1726M +0.12%F +0.05%P +70F +62P DGV-LPI+3140
 CA 08/14 HL 110 / SCS 2.82 / Fert 100 / CA 111 / MS 13 / F&L 16 / DS 3 / R 3 / Conf. 14

Details / Progeny - #1 GTPI, GLPI & GRZG Red Heifer in the Breed!
 - **OUTCROSS for Red!**



PEDIGREE

Dymentholm S SYMPATICO *RC

Gen-I-Beg Snowman Summer *RC
 Conf. VG-85-2YR-CAN

2-01 2x 358d 30.199lbM 3.5% 1052F 3.1% 935P

Flevo Genetics SNOWMAN

Gen-I-Beg Bolton Secretly
 Conf. VG-87-CAN 89-MS

2-01 2x 365d 30.474lbM 4.4% 1.327F 3.4% 1.043P

Sandy-Valley BOLTON

Gen-I-Beg Goldwyn Secret *RC
 Conf. VG-87-CAN-2YR 89-MS

2-00 2x 365d 25.593lbM 4.8% 1.237F 3.6% 917P
 5-05 2x 365d 30.573lbM 4.5% 1.389F 3.4% 1.038P

- Global R&W Cow of the Year 2011
 - Dam to Secure @ Generations, Mr Savage @ Taurus
- Next Dams**

- 4th Gen-I-Beg Durham Sherry
- 5th Glen Drummond Splendor VG-86-2YR-CAN
- 6th Glen Drummond Aero Flower VG-88-CAN
- 7th Glen Drummond Shower EX-90-CAN
- 8th Glen Drummond S C Jo Beth EX-90-CAN 2E
- 9th Glen Drummond Math Beth VG-85-CAN
- 10th Glen Drummond Marquis Beth VG-CAN
- 11th Ferglynn Rag Apple Berth VG-CAN



10. Huge Production Sire, PTAM+2160 & +171 Fat+Prot.

Details

Details about the bull in this package

BULL

Name	Genetic Test	ID	D.O.B.	Sire	Dam	Country
Mr Balis Target	USA test	US 3124584745	09-June-2014	De-Su 11236 Balisto	Ms Welcome Uno Tarina	United States

Genomic Result

Genomic Results 08/14

Chip: 80K

USDA-CDCB GENOMIC - SIRE EVALUATIONS (08/2014)

Milk	+2160	73%R	0 Dtrs	0 Herds	100% US
Fat	+92	+0.05%			
Protein	+79	+0.05%	EFI %	GFI	7.5%
PL	+3.0	66%R	Net Merit \$		+759
SCS	2.81	69%R	Fluid Merit \$		+701
DPR	+0.6	65%R	Cheese Merit \$		+834
HCR	+1.4		CCR		+0.3

NAAB CALVING TRAITS EVALUATIONS (08/2014)

Sire Calving Ease	7.3%	59%R	0 Obs
Daughter Calving Ease	4.1%	52%R	0 Obs
Sire Stillbirth	8.2%	53%R	0 Obs
Daughter Stillbirth	6.3%	48%R	0 Obs

USDA-CDCB / HA GENOMIC - TYPE (08/2014) TPI +2473

	PTAT +3.22	71%R	UDC +2.10	FLC +2.49	0 Dtrs	0 Herds	
Stature	-2	-1	0	1	2	+3.32	Tall
Strength						+1.98	Strong
Body Depth						+2.35	Deep
Dairy Form						+3.09	Open Rib
Rump Angle						+0.01	Sloped
Thurl Width						+2.25	Wide
Rear Legs-Side View						-0.33	Posty
Rear Legs-Rear View						+2.55	Straight
Foot Angle						+2.43	Steep
Feet & Legs Score						+2.83	High
F. Udder Attachment						+2.78	Strong
Rear Udder Height						+4.10	High
Rear Udder Width						+3.77	Wide
Udder Cleft						+1.28	Strong
Udder Depth						+1.31	Shallow
Front Teat Placement						+0.73	Close
Rear Teat Placement						+0.16	Close
Teat Length						+0.90	Long

GPA-LPI	+3340
DGV-LPI	+3462
Production Traits	
Milk	+1937
%Fat	+0.18
Fat (lbs)	+91
%Prot	+0.19
Prot (lbs)	+83
Management Traits	
Herd Life	111
Daughter Calving Ability	109
Somatic Cell Score	2.77
Milking Speed	101
Composites and Conf.	
Mammary System	+9
Feet & Legs	+9
Dairy Strength	+9
Rump	+5
Conformation	+13

SIRE INFORMATION

Information about the sires in this package

De-Su 1123 BALISTO

(Bookem x Watson x Oman)

US 08/14 (77%R) +1901M +0.12% +0.10% +100F +83P NM \$ 846 / GTPI +2454

US 08/14 CE 5.9 / DCE 3.9 / PL +4.4 / SCS 2.75 / DPR -0.6 / SSB 7.4 / DSB 6.2

US 08/14 UDC +1.82 / FLC +2.01 / BC +1.66 / DC +2.30 / PTAT +2.57





2nd DAM: Ms Welcome Colby Taya VG-88 DOM | Dam to Tango @ Genex



Sister to DAM: Ms Welcome Iota Tacey VG-88



DAM: Ms Welcome Uno Tarina

Ms Welcome Uno Tarina

Reg.no. US 3009276290 D.O.B. 17-July-2012

Genomic Index US 08/14 +1810M +88F +58P NM \$ 758 **GTPI +2431**
 US 08/14 PL +3.6 / SCS 2.73 / DPR +1.6 / SCE 8.3 / DCE 5.3
 US 08/14 FLC +2.69 / UDC +2.40 / PTAT +3.14

Details / Progeny - Beautiful Numero Uno heifer out of a Tremendous Outcross Source!
 - Tremendous Transmitter
 - Her Balisto son with HUGE Production numbers (+2160lbs. Milk +171lbs. Fat + Protein)



PEDIGREE

Amighetti NUMERO UNO

Ms Welcome Colby Taya
 Conf. VG-88-USA DOM

1-10 365d 41.237lbsM 3.3% 1.357F 3.2% 1.333P

- Dam of Mr Welcome Hill Tango @ Genex/CRI
- Tremendous Brood Cow
- OUTCROSS

Solid-Gold COLBY

Clear-Echo FBI 1461
 Conf. EX-90-USA EX-MS

2-00 365d 36.230lbsM 3.5% 1.261F 2.9% 1.053P

- 1 Excellent & 4 VG daughters in the USA to date

Gillette Brilea FBI

Clear-Echo 2635 Bol 1204
 Conf. VG-88-USA DOM

6.05 365d 18.058kgM 4.1% 794F 3.5% 615P
 9.00 365d 21.981kgM 4.0% 881F 3.4% 748P

Next Dams

- 4th Clear-Echo Addisn Thea 635 VG-85 GMD DOM
- 5th Clear-Echo Matt Thea 380 GP-83
- 6th Clear-Echo Lake Thea EX-90
- 7th Caernarvon Thor Shea EX-90
- 8th Cabin-Run Mark Star VG-86 GMD DOM
- 9th Gay-Ridge Spirit Stacey VG-86 GMD DOM



11. The Best of RED... NOW AVAILABLE!

Details

Details about the bull in this package

BULL

Name	Genetic Test	ID	D.O.B.	Sire	Dam	Country
DG Boris-Red	USA test	US 3124837856	22-July-2014	Ladys-Manor Olympian *RC	Calbrett Supersire Barb *RC	United States

Genomic Result

Genomic Results 09/14

Chip: 3K

USDA-CDCB GENOMIC - SIRE EVALUATIONS (09/2014)

Milk	+1571	70%R	0 Dtrs	0 Herds	% US
Fat	+63	+0.02%			
Protein	+57	+0.04%	EFI %	GFI	6.1%
PL	+6.4	%R	Net Merit \$		+790
SCS	2.68	%R	Fluid Merit \$		+734
DPR	+0.4	%R	Cheese Merit \$		+853
HCR	+0.4		CCR		+0.7

NAAB CALVING TRAITS EVALUATIONS (09/2014)

Sire Calving Ease	9.3%	51%R	0 Obs
Daughter Calving Ease	7.3%	46%R	0 Obs
Sire Stillbirth	7.3%	46%R	0 Obs
Daughter Stillbirth	5.2%	43%R	0 Obs

USDA-CDCB / HA - TYPE (09/2014) TPI +2421

PTAT +3.15	68%R	UDC +3.51	FLC +1.54	0 Dtrs	0 Herds
Stature	+2.02	Tall			
Strength	+0.68	Strong			
Body Depth	+0.77	Deep			
Dairy Form	+1.57	Open Rib			
Rump Angle	-0.61	High Pins			
Thurl Width	+1.19	Wide			
Rear Legs-Side View	+0.68	Sickle			
Rear Legs-Rear View	+1.51	Straight			
Foot Angle	+1.64	Steep			
Feet & Legs Score	+1.84	High			
F. Udder Attachment	+4.52	Strong			
Rear Udder Height	+4.77	High			
Rear Udder Width	+4.39	Wide			
Udder Cleft	+1.62	Strong			
Udder Depth	+3.72	Shallow			
Front Teat Placement	+1.47	Close			
Rear Teat Placement	+0.72	Close			
Teat Length	+0.22	Long			

SIRE INFORMATION

Information about the sires in this package

Ladys-Manor OLYMPIAN *RC

(Alchemy x Dorcy x Auden)

US 08/14 (75%R) +1437M -0.06%F +0.04%P +38F +53P NM \$767 / GTPI +2459

US 08/14 CE 9.4 / DCE 5.8 / PL +6.0 / SCS 2.53 / DPR +2.5 / SSB 7.3 / DSB 6.0

US 08/14 UDC +3.53 / FLC +2.28 / BC +2.09 / DC +1.57 / PTAT 3.05





3rd DAM: Rainyridge Talent Barbara EX-95-5YR-USA



DAM: Calbrett Supersire Barb *RC

Calbrett Supersire Barb *RC

Reg.no. CAN 11658906 D.O.B. 11-January-2013

Genomic Index
 US 09/14 +2125M +90F +70P NM \$ 835 **GTPI +2482**
 US 09/14 PL +5.6 / SCS 2.89 / DPR +0.6 / SCE 8.1 / DCE 5.8
 US 09/14 FLC +2.56 / UDC +1.73 / PTAT +3.31

Details / Progeny

- Barb *RC is one of the highest RC GTPI/GLPI Flush-Age heifers in the Breed!
- Backed by a Tremendous Pedigree
- Her GTPI+2421 RED Olympian son sells!



PEDIGREE

Seagull-Bay SUPERSIRE

Rainyridge Super Beth *RC
 Conf. VG-86-2YR-CAN

2-03 2x 365d 23.739lbM 3.7% 877F 3.5% 822P

- The Best of Both Worlds, Genomics from a Tremendous Type Family!

Charlesdale SUPERSTITION

Rainyridge Talent Barbara *RC
 Conf. EX-95-5YR

2-05 2x 298d 24.720lbM 4.1% 1.023F 3.2% 789P
 3-04 2x 365d 34.465lbM 3.6% 1.257F 3.3% 1.133P

- Unanimous All-American 5-Yr-Old
- Unanimous All-Canadian 5-Yr-Old • 1st 5-Yr-Old RWF 2010
- 1st 5-Yr-Old WDE 2010

Ladino Park TALENT

RF Outside Breeze
 Conf. EX-95-USA 2E

2-03 2x 365d 23.849lbM 6.2% 1.477F 4.3% 1.021P
 4-02 2x 365d 31.920lbM 4.7% 1.488F 3.5% 1.113P
 8-00 2x 365d 37.970lbM 3.9% 1.484F 3.4% 1.299P

Next Dams

- 4th **Rayverley Briana Milan EX-CAN 2E**
- 5th **Rainyridge Tony Beauty EX-CAN 5E**
- Grand Champion RWF '93
- Reserve Grand Champion RWF '95 & '99
- Grand Champion WDE '99
- 6th **Despics Tempo Diana VG-CAN**



12. ALLROUND, Milk, Type and Fitness in one Package!

Details

Details about the bull in this package

BULL

Name	Genetic Test	ID	D.O.B.	Sire	Dam	Country
Mr Cam Talbot	USA test	US 83963301	31-July-2014	Stantons Camaro	Ms Welcome Uno Tarina	United States

Genomic Result

Genomic Results 09/14

Chip: 80K

USDA-CDCB GENOMIC - SIRE EVALUATIONS (09/2014)					
Milk	+1686	72%R		0 Dtrs	0 Herds % US
Fat	+86	+0.10%			
Protein	+58	+0.03%	EFI %	GFI	7.6%
PL	+5.7	%R	Net Merit \$		+840
SCS	2.55	%R	Fluid Merit \$		+782
DPR	+0.9	%R	Cheese Merit \$		+898
HCR	+2.8		CCR		+3.9

NAAB CALVING TRAIT'S EVALUATIONS (09/2014)				
Sire Calving Ease	7.7%	53%R	0 Obs	
Daughter Calving Ease	4.8%	50%R	0 Obs	
Sire Stillbirth	8.4%	48%R	0 Obs	
Daughter Stillbirth	5.8%	47%R	0 Obs	

USDA-CDCB / HA - TYPE (09/2014)				TPI +2483			
PTAT +3.19	69%R	UDC +2.53	FLC +2.13	0 Dtrs 0 Herds			
Stature	-2	-1	0	1	2	+2.61	Tall
Strength						+1.17	Strong
Body Depth						+1.50	Deep
Dairy Form						+2.51	Open Rib
Rump Angle						-0.10	High Pins
Thurl Width						+2.46	Wide
Rear Legs-Side View						+0.72	Sickle
Rear Legs-Rear View						+2.15	Straight
Foot Angle						+2.02	Steep
Feet & Legs Score						+2.61	High
F. Udder Attachment						+3.02	Strong
Rear Udder Height						+3.50	High
Rear Udder Width						+3.22	Wide
Udder Cleft						+2.54	Strong
Udder Depth						+2.32	Shallow
Front Teat Placement						+1.42	Close
Rear Teat Placement						+1.11	Close
Teat Length						-0.26	Short

SIRE INFORMATION

Information about the sires in this package

Stantons CAMARO

(Epic x Freddie x Lucky Star)

US 08/14 76%R) +1179M +0.14% +0.06% +81F +50P NM \$ 854 / GTPI +2439
 US 08/14 CE 6.0 / DCE 4.5 / PL +6.9 / SCS 2.69 / DPR +1.7 / SSB 7.7 / DSB 4.5
 US 08/14 UDC +2.19 / FLC +2.37 / BC +1.68 / DC +1.57 / PTAT +2.59





2nd DAM: Ms Welcome Colby Taya VG-88 DOM | Dam to Tango @ Genex



Sister to DAM: Ms Welcome Iota Tacey VG-88



DAM: Ms Welcome Uno Tarina

Ms Welcome Uno Tarina

Reg.no. US 3009276290 **D.O.B.** 17-July-2012

Genomic Index US 08/14 +1810M +88F +58P NM \$ 758 **GTPI +2431**
 US 08/14 PL +3.6 / SCS 2.73 / DPR +1.6 / SCE 8.3 / DCE 5.3
 US 08/14 FLC +2.69 / UDC +2.40 / PTAT +3.14

ONLINE BULL SALE
Tremendous Camaro son SELLS!

Details / Progeny

- Beautiful Numero Uno heifer out of a Tremendous Outcross Source!
- Tremendous Transmitter
- Unique Pedigree

PEDIGREE

Amighetti NUMERO UNO

Ms Welcome Colby Taya
 Conf. VG-88-USA DOM

1-10 365d 41.237lbsM 3.3% 1.357F 3.2% 1.333P

- Dam of Mr Welcome Hill Tango @ Genex/CRI
- Tremendous Brood Cow
- OUTCROSS

Solid-Gold COLBY

Clear-Echo FBI 1461
 Conf. EX-90-USA EX-MS

2-00 365d 36.230lbsM 3.5% 1.261F 2.9% 1.053P

- 1 Excellent & 4 VG daughters in the USA to date

Gillette Brilea FBI

Clear-Echo 2635 Bol 1204
 Conf. VG-88-USA DOM

6.05 365d 18.058kgM 4.1% 794F 3.5% 615P
 9.00 365d 21.981kgM 4.0% 881F 3.4% 748P

Next Dams

- 4th Clear-Echo Addisn Thea 635 VG-85 GMD DOM
- 5th Clear-Echo Matt Thea 380 GP-83
- 6th Clear-Echo Lake Thea EX-90
- 7th Caernarvon Thor Shea EX-90
- 8th Cabin-Run Mark Star VG-86 GMD DOM
- 9th Gay-Ridge Spirit Stacey VG-86 GMD DOM



13. High Net Merit Bull from the BARBIES!

Details

Details about the bull in this package

BULL

Name	Genetic Test	ID	D.O.B.	Sire	Dam	Country
Mr Brinley Chv 55389	USA test	US 3010354136	23-May-2014	Vekis Chevrolet	Ms Boyana Uno Brinley	United States

Genomic Result

Genomic Results 09/14

Chip: 80K

USDA-CDCB GENOMIC - SIRE EVALUATIONS (09/2014)						
Milk	+1128	72%R		0 Dtrs	0 Herds	% US
Fat	+58	+0.06%				
Protein	+38	+0.01%	EFI %		GFI	7.7%
PL	+7.9	%R	Net Merit \$			+852
SCS	2.48	%R	Fluid Merit \$			+795
DPR	+1.8	%R	Cheese Merit \$			+899
HCR	+2.5		CCR			+2.6

NAAB CALVING TRAITS EVALUATIONS (09/2014)			
Sire Calving Ease	7.8%	57%R	0 Obs
Daughter Calving Ease	4.6%	51%R	0 Obs
Sire Stillbirth	8.1%	51%R	0 Obs
Daughter Stillbirth	5.5%	48%R	0 Obs

USDA-CDCB / HA - TYPE (09/2014)			TPI +2445				
PTAT +2.96	70%R	UDC +3.02	FLC +2.52	0 Dtrs	0 Herds		
Stature	-2	-1	0	1	2	+1.82	Tall
Strength						+0.23	Strong
Body Depth						-0.12	Shallow
Dairy Form						+0.97	Open Rib
Rump Angle						+0.71	Sloped
Thurl Width						+1.68	Wide
Rear Legs-Side View						-1.46	Posty
Rear Legs-Rear View						+2.34	Straight
Foot Angle						+2.75	Steep
Feet & Legs Score						+2.64	High
F. Udder Attachment						+3.33	Strong
Rear Udder Height						+3.64	High
Rear Udder Width						+3.35	Wide
Udder Cleft						+2.78	Strong
Udder Depth						+3.44	Shallow
Front Teat Placement						+1.92	Close
Rear Teat Placement						+1.65	Close
Teat Length						-0.29	Short

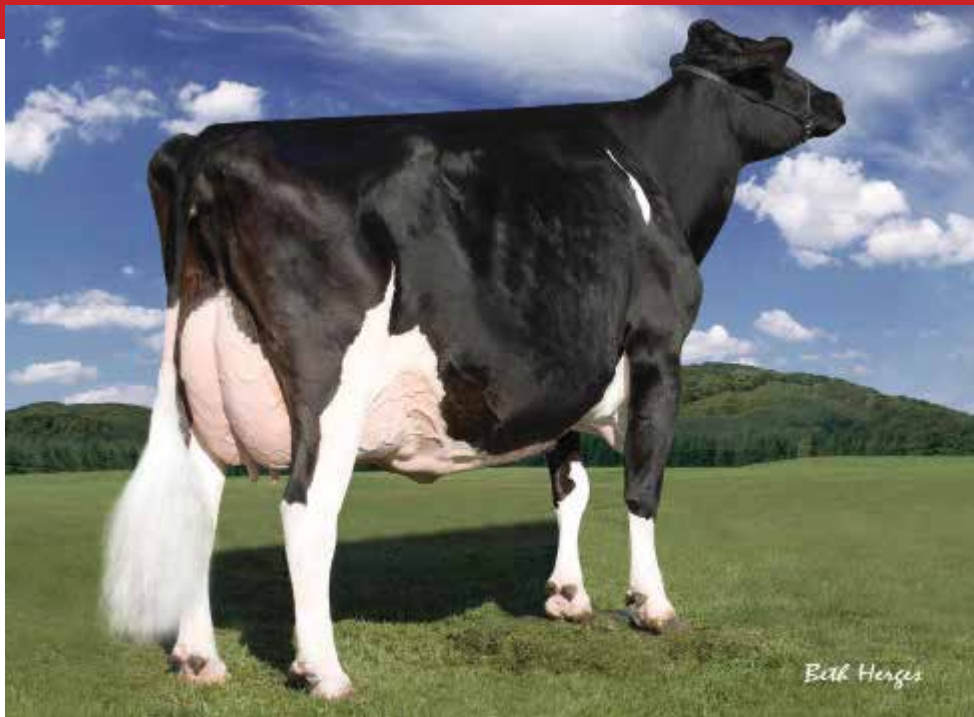
SIRE INFORMATION

Information about the sires in this package

Vekis CHEVROLET
(Freddie x Planet x Shottle)

US 08/14 (77%R) +2116M -0.01% +0.01% +77F +65P NM \$ 759 / GTPI +2313
 US 08/14 CE 7.5 / DCE 4.8 / PL +4.6 / SCS 2.86 / DPR +1.2 / SSB 7.6 / DSB 5.0
 US 08/14 UDC +1.63 / FLC +1.56 / BC +0.85 / DC +1.14 / PTAT +1.99





4th DAM: Regancrest-PR Barbie EX-92 GMD DOM



DAM: Ms Boyana Uno Brinley



2nd DAM: Farnear-TBR-BH Bowr Boyana VG-85

Ms Boyana Uno Brinley

Reg.no. US 71494817 D.O.B. 05-August-2012

Genomic Index US 08/14 +707M +43F +32P NM \$ 690 **GTPI +2390**
 US 08/14 PL +6.5 / SCS 2.66 / DPR +1.1 / SCE 8.6 / DCE 6.1
 US 08/14 FLC +4.12 / UDC +2.92 / PTAT +3.95

Details / Progeny - Her Exciting Chevrolet son sells!
 - Unique & OUTCROSS maternal line going back to BARBIE!

ONLINE BULL SALE
High NET MERIT
 sire from the
BARBIES

PEDIGREE

Amighetti NUMERO UNO

Farnear-TBR-BH Bowsr Boyana
 Conf. VG-85-2YR VG-MS

2-02 2x 365d 20.936lbM 5.4% 1.133F 3.2% 663P

• Tremendous OUTCROSS going back to the BARBIES!

Laeschway Jet BOWSER

Klassic Mac Barb
 Conf. VG-85-2YR VG-MS

2-05 2x 365d 30.349lbM 4.0% 1.206F 3.5% 1.067P

Regancrest-HHF MAC

Regancrest Barbi
 Conf. EX-90 DOM

5-00 2x 305d 27.379lbM 3.2% 869F 3.5% 948P

Next Dams

- 4th Regancrest-PR Barbie EX-92-USA GMD DOM
- 5th Regancrest Juror Brina EX-92-USA GMD
- 6th Regancrest Aerostar Bert EX-9-USA GMD DOM
- 7th Regancrest Mark Chairman Bea EX-91 GMD DOM
- 8th Regancrest Board Chairman Bea EX-90-USA
- 9th Regancrest Apache Standout Bea VG-86-USA
- 10th Regancrest Standout Betrand VG-85-USA



14. Very Complete Bull with Fitness, Type & Production!

Details

Details about the bull in this package

BULL

Name	Genetic Test	ID	D.O.B.	Sire	Dam	Country
IHG Halo Valdez	USA test	US 73963280	26-July-2014	Cookiecutter Petron Halogen	Farnear-TBR-BH Varsity	United States

Genomic Result

Genomic Results 09/14

Chip: 80K

USDA-CDCB GENOMIC - SIRE EVALUATIONS (09/2014)

Milk	+1535	72%R	0 Dtrs	0 Herds	% US
Fat	+79	+0.09%			
Protein	+60	+0.05%	EFI %	GFI	7.4%
PL	+6.1	%R	Net Merit \$		+823
SCS	2.94	%R	Fluid Merit \$		+775
DPR	+2.3	%R	Cheese Merit \$		+890
HCR	+2.9		CCR		+3.8

NAAB CALVING TRAITS EVALUATIONS (09/2014)

Sire Calving Ease	7.7%	57%R	0 Obs
Daughter Calving Ease	4.9%	51%R	0 Obs
Sire Stillbirth	7.8%	52%R	0 Obs
Daughter Stillbirth	5.2%	47%R	0 Obs

USDA-CDCB / HA - TYPE (09/2014) TPI +2464

	-2	-1	0	1	2				
PTAT +3.11	69%R					UDC +2.45	FLC +1.53	0 Dtrs	0 Herds
Stature						+2.21	Tall		
Strength						+0.54	Strong		
Body Depth						+1.04	Deep		
Dairy Form						+2.80	Open Rib		
Rump Angle						+0.78	Sloped		
Thurl Width						+0.58	Wide		
Rear Legs-Side View						+1.05	Sickle		
Rear Legs-Rear View						+1.43	Straight		
Foot Angle						+1.21	Steep		
Feet & Legs Score						+2.11	High		
F. Udder Attachment						+2.82	Strong		
Rear Udder Height						+3.97	High		
Rear Udder Width						+3.86	Wide		
Udder Cleft						+2.81	Strong		
Udder Depth						+1.92	Shallow		
Front Teat Placement						+2.28	Close		
Rear Teat Placement						+2.84	Close		
Teat Length						-0.19	Short		

GPA-LPI	+3330
DGV-LPI	+3416
Production Traits	
Milk	+1752
%Fat	+0.23
Fat (lbs)	+89
%Prot	+0.14
Prot (lbs)	+72
Management Traits	
Herd Life	115
Daughter Calving Ability	109
Somatic Cell Score	2.93
Milking Speed	102
Composites and Conf.	
Mammary System	+11
Feet & Legs	+7
Dairy Strength	+4
Rump	+1
Conformation	+11

SIRE INFORMATION

Information about the sires in this package

Cookiecutter Petron HALOGEN

(Petrone x Man O Man x Goldwyn)

US 08/14 (75%R) +958M +0.08% +0.03% +54F +37P NM \$ 882 / GTPI +2487

US 08/14 CE 6.8 / DCE 4.8 / PL +7.9 / SCS 2.36 / DPR +3.7 / SSB 7.6 / DSB 5.2

US 08/14 UDC +3.06 / FLC +1.21 / BC +1.83 / DC +1.67 / PTAT +2.88





2nd DAM: Vision-Gen Sh Sho A12037 VG-87-2YR



DAM: Farnear-TBR-BH Varsity



3rd DAM: Ky-Blue GW Dana EX-91-USA

Farnear-TBR-BH Varsity

Reg.no. US 71290935 D.O.B. 01-December-2012

Genomic Index US 08/14 +1607M +83F +62P NM \$ 754 **GTPI +2395**
 US 08/14 PL +4.4 / SCS 2.88 / DPR +1.1 / SCE 6.8 / DCE 4.7
 US 08/14 FLC +1.71 / UDC +2.44 / PTAT +2.95

Details / Progeny - Beautiful Supersire daughter that is backed by the ADEENS!
 - Complete Package: Index, (Show-)Type, Fitness, Pedigree and a Top-Ranking GTPI!
 - Already has several offspring testing over +2400G!



PEDIGREE

Seagull-Bay SUPERSIRE

Vision-Gen Sh Sho A12037
 Conf. VG-87-2YR-USA

2-02 305d 26.486lbM 3.7% 981F 3.4% 899P

- Close family to Atwood, Golden Dreams, Aftershock and more!

Picston SHOTTLE

Ky-Blue GW Dana
 Conf. EX-91-4YR-USA

4-01 2x 185d 16.881lbM 4.5% 765F 3.2% 540P

- 4th Generation Excellent

Braedale Goldwyn

BVK Outside Diana
 Conf. EX-92-USA 2E DOM

2-05 365d 20.820lbM 3.5% 725F 3.3% 697P
 3-08 365d 27.631lbM 3.4% 933F 3.4% 944P
 5-01 365d 31.921lbM 3.5% 1.129F 3.2% 1.034P

- Maternal sister to MD-Delight Durham Atlee EX-92

Next Dams

4th Ms Kingstead Chief Adeen EX-94-USA 2E DOM
 5th Aitkenbrae Starbuck Ada EX-94-USA 2E DOM



15. Sensational Polled & Red Carrier! GTPI+2300 & CE+6.3!

Details

Details about the bull in this package

BULL

Name	Genetic Test	ID	D.O.B.	Sire	Dam	Country
IHG Sensational MG 55736	USA test	US 3010354483	21-June-2014	Mr Moviestar Mardi Gras	K-Manor Sensational-Red	United States

Genomic Result

Genomic Results 09/14

Chip: 80K

USDA-CDCB GENOMIC - SIRE EVALUATIONS (09/2014)

Milk	+712	72%R	0 Dirs	0 Herds	% US
Fat	+68	+0.16%			
Protein	+41	+0.07%	EFI %	GFI	7.1%
PL	46.5	%R	Net Merit \$		+767
SCS	2.79	%R	Fluid Merit \$		+882
DPR	+2.1	%R	Cheese Merit \$		+863
HCR	+2.0		CCR		+2.4

NAAB CALVING TRAITS EVALUATIONS (09/2014)

Sire Calving Ease	6.3%	53%R	0 Obs
Daughter Calving Ease	5.7%	48%R	0 Obs
Sire Stillbirth	6.9%	48%R	0 Obs
Daughter Stillbirth	6.6%	46%R	0 Obs

USDA-CDCB / HA - TYPE (09/2014) TPI +2300

PTAT +2.23 69%R UDC +2.12 FLC +1.57 0 Dirs 0 Herds

Stature	+0.87	Tall
Strength	+0.37	Strong
Body Depth	+0.35	Deep
Dairy Form	+0.67	Open Rib
Rump Angle	+1.41	Sloped
Thurl Width	+0.80	Wide
Rear Legs-Side View	-0.61	Posty
Rear Legs-Rear View	+2.01	Straight
Foot Angle	+1.84	Steep
Feet & Legs Score	+2.22	High
F. Udder Attachment	+2.85	Strong
Rear Udder Height	+3.31	High
Rear Udder Width	+3.05	Wide
Udder Cleft	+0.97	Strong
Udder Depth	+2.21	Shallow
Front Teat Placement	+0.19	Close
Rear Teat Placement	+0.09	Close
Teat Length	+0.03	Long

GPA-LPI	+3135
DGV-LPI	+3224
Production Traits	
Milk	+802
%Fat	+0.42
Fat (lbs)	+74
%Prot	+0.21
Prot (lbs)	+49
Management Traits	
Herd Life	117
Daughter Calving Ability	107
Somatic Cell Score	2.78
Milking Speed	104
Composites and Conf.	
Mammary System	+11
Feet & Legs	+10
Dairy Strength	+0
Rump	+7
Conformation	+11

SIRE INFORMATION

Information about the sires in this package

Mr Moviestar MARDI GRAS

(Mogul x Planet x Shottle)

US 08/14 (75%R) +1277M +0.13% +0.05% +80F +51P NM \$ 861 / GTPI +2480

US 08/14 CE 6.6 / DCE 5.4 / PL +6.6 / SCS 2.82 / DPR +2.5 / SSB 7.7 / DSB 6.7

US 08/14 UDC +3.07 / FLC +1.71 / BC +1.15 / DC +1.18 / PTAT +2.83





DAM: K-Manor Sensational-Red *PP



2nd DAM: Lookout Pesce Mag Sarah GP-84-2YR



3rd DAM: Charpentier Mr Burns Sisi EX-92-CAN

K-Manor Sensational-Red *PP

Reg.no. 72127427 D.O.B. 20-Decemberr-2012

Genomic Index US 08/14 +428M +38F +29P NM \$ 468 **GTPI +2058**
 US 08/14 PL +4.2 / SCS 2.91 / DPR +0.8 / SCE 8.1 / DCE 6.7
 US 08/14 FLC +2.59 / UDC +2.29 / PTAT +2.64

Details / Progeny - One of the highest Red Homozygous Polled Females in the Breed
 - Unique Pedigree going back to **SPLENDOR!**
 - Her **GTPI+2300 Polled & Red Carrier Mardi Gras** son sells!



PEDIGREE

Tiger-Lily Ladd P-Red

Lookout Pesce Mag Sarah
 Conf. GP-84-2YR-CAN

Arron Doon West Port Magna *P *RC

Charpentier Mr Burns Sisi
 Conf. EX-92-CAN

4-04 3x 365d 40.010lbM 4.1% 1.635F 3.2%

Dudoc Mr Burns

Charpentier FBI Sierra
 Conf. VG-89-CAN

5-00 2x 365d 53.369lbM 3.6% 1.937F 3.2% 1.715P
 Life: 2 Lact 109.935lbM 3.7% 4.065F 3.4% 3.750P

Next Dams

- 4th Gen-I-Beq Talent Spectra VG-85-CAN
- 5th Glen Drummond Splendor VG-86-2YR-CAN
- 6th Glen Drummond Aero Flower VG-88-CAN
- 7th Glen Drummond Shower EX-90-CAN
- 8th Glen Drummond S C Jo Beth EX-90-CAN 2E
- 9th Glen Drummond Math Beth VG-85-CAN
- 10th Glen Drummond Marquis Beth VG-CAN
- 11th Ferglynn Rag Apple Berth VG-CAN



16. Fantastic Production, Components & DPR!

Details

Details about the bull in this package

BULL

Name	Genetic Test	ID	D.O.B.	Sire	Dam	Country
IHG Cam Tirana	USA test	US 73963294	30-July-2014	Stantons Camaro	Midas-Touch Mccut Tisha	United States

Genomic Result

Genomic Results 09/14

Chip: 80K

USDA-CDCB GENOMIC - SIRE EVALUATIONS (09/2014)

Milk	+1876	72%R	0 Dtrs	0 Herds	% US
Fat	+79	+0.04%			
Protein	+68	+0.04%	EFI %	GFI	7.5%
PL	+4.7	%R	Net Merit \$		+779
SCS	2.99	%R	Fluid Merit \$		+747
DPR	+1.4	%R	Cheese Merit \$		+832
HCR	+1.7		CCR		+2.7

NAAB CALVING TRAITS EVALUATIONS (09/2014)

Sire Calving Ease	6.3%	53%R	0 Obs
Daughter Calving Ease	4.7%	48%R	0 Obs
Sire Stillbirth	7.6%	48%R	0 Obs
Daughter Stillbirth	4.3%	45%R	0 Obs

USDA-CDCB / HA - TYPE (09/2014) TPI +2443

PTAT +2.83	69%R	UDC +2.56	FLC +2.35	0 Dtrs	0 Herds
Stature	+2.94	Tall			
Strength	+0.78	Strong			
Body Depth	+1.09	Deep			
Dairy Form	+2.28	Open Rib			
Rump Angle	+0.36	Sloped			
Thurl Width	+1.62	Wide			
Rear Legs-Side View	+0.71	Sickle			
Rear Legs-Rear View	+2.32	Straight			
Foot Angle	+2.22	Steep			
Feet & Legs Score	+2.88	High			
F. Udder Attachment	+2.91	Strong			
Rear Udder Height	+3.20	High			
Rear Udder Width	+2.94	Wide			
Udder Cleft	+2.29	Strong			
Udder Depth	+2.82	Shallow			
Front Teat Placement	+1.93	Close			
Rear Teat Placement	+1.90	Close			
Teat Length	-0.60	Short			

GPA-LPI	+3328
DGV-LPI	+3404
Production Traits	
Milk	+1941
%Fat	+0.14
Fat (lbs)	+86
%Prot	+0.11
Prot (lbs)	+76
Management Traits	
Herd Life	111
Daughter Calving Ability	109
Somatic Cell Score	2.92
Milking Speed	104
Composites and Conf.	
Mammary System	+12
Feet & Legs	+9
Dairy Strength	+8
Rump	+4
Conformation	+13

SIRE INFORMATION

Information about the sires in this package

Stantons CAMARO

(Epic x Freddie x Lucky Star)

US 08/14 76%R) +1179M +0.14% +0.06% +81F +50P NM \$ 854 / GTPI +2439

US 08/14 CE 6.0 / DCE 4.5 / PL +6.9 / SCS 2.69 / DPR +1.7 / SSB 7.7 / DSB 4.5

US 08/14 UDC +2.19 / FLC +2.37 / BC +1.68 / DC +1.57 / PTAT +2.59





DAM: Ms Welcome Iota Tacey VG-88



2nd DAM: Ms Welcome Colby Taya VG-88



Midas-Touch Mccut Tisha

Midas-Touch Mccut Tisha

Reg.no. US 71140758 D.O.B. 16-January-2013

Genomic Index US 08/14 +2022M +90F +72P NM \$ 697 **GTPI +2353**
 US 08/14 PL +2.7 / SCS 2.89 / DPR +0.2 / SCE 6.8 / DCE 5.1
 US 08/14 FLC +2.30 / UDC +1.96 / PTAT +2.72

Details / Progeny - Unique Pedigree with **OUTCROSS Maternal Line**
 - Her Very Complete Camaro Sons Sells including **+1876lbs. Milk, +147lbs. Fat + Protein and DPR+1.4!**

ONLINE BULL SALE
Very Complete Camaro son SELLS!

PEDIGREE

De-Su Bkm MCCUTCHEN 1174

Ms Welcome Iota Tacey
 Conf. VG-88-2YR-USA

2-03 3x 116d 13.370lbM 3.5% 473F 3.3% 435P inc.

Regancrest aitaLOTA

Ms Welcome Colby Taya
 Conf. VG-88-USA DOM

1-10 365d 41.237lbsM 3.3% 1.357F 3.2% 1.333P

- Dam of Mr Welcome Hill Tango @ Genex/CRI
- Tremendous Brood Cow
- OUTCROSS

Solid-Gold COLBY

Clear-Echo FBI 1461
 Conf. EX-90-USA EX-MS

2-00 365d 36.230lbsM 3.5% 1.261F 2.9% 1.053P

- 1 Excellent & 4 VG daughters in the USA to date

Next Dams

- 4th Clear-Echo 2635 Bol 1204 VG-88-USA DOM
- 5th Clear-Echo Addisn Thea 635 VG-85 GMD DOM
- 6th Clear-Echo Matt Thea 380 GP-83
- 7th Clear-Echo Lake Thea EX-90
- 8th Caernarvon Thor Shea EX-90
- 9th Cabin-Run Mark Star VG-86 GMD DOM
- 10th Gay-Ridge Spirit Stacey VG-86 GMD DOM



17. The NEXT CHART-TOPPING RED CARRIER!

Details

Details about the pregnancies in this package

Pregnancies

Sire	Dam	# of pregnancies	Impl. Date	Country
Morningview Kingboy	Calbrett Supersire Barb *RC	2 Male Pregnancies	March, June 2014	United States
Stantons Main Event	Calbrett Supersire Barb *RC	6 Transfers	21-August-2014	United States
View-Home Powerball-P	Calbrett Supersire Barb *RC	9 Transfers	24-July-2014	United States

Guarantee

At least 2 bulls to choose from. See Terms & Conditions article 8.7

Pregnancies

Genomic Parent Average 08/14 of the mating

Sire	Index Base	PTPI	Lbs Milk	Lbs Fat	Lbs Prt	PTAT	FLC	UDC	DPR	PL	SCS	SCE
Morningview Kingboy	US 08/14	+2538	+2064	+82	+68	+3.58	+2.83	+2.26	+1.1	+5.7	2.82	7.9%
Stantons Main Event	US 08/14	+2533	+1781	+84	+63	+3.24	+2.41	+2.76	+1.6	+6.3	2.77	7.6%
View-Home Powerball-P	US 08/14	+2484	+1889	+83	+71	+2.99	+1.69	+2.50	+1.3	+5.3	2.86	7.4%

SIRE INFORMATION

Information about the sires in this package

Morningview Mcc KINGBOY

(McCutchen x Superstition x Shottle)

US 08/14 (74%R) +1992M +0.00%F +0.02%P +73F +65P NM \$833 / GTPI +2586

US 08/14 CE 7.7 / DCE 3.5 / PL +5.7 / SCS 2.75 / DPR +1.6 / SSB 8.0 / DSB 4.4

US 08/14 UDC +3.08 / FLC +2.77 / BC +2.90 / DC +2.49 / PTAT +3.84

Stantons MAIN EVENT

(McCutchen x Superstition x Shottle)

US 08/14 (76%R) +1426M +0.10%F +0.05%P +77F +56P NM \$906 / GTPI +2579

US 08/14 CE 7.1 / DCE 5.6 / PL +6.8 / SCS 2.65 / DPR +2.6 / SSB 7.7 / DSB 6.1

US 08/14 UDC +2.94 / FLC +3.06 / BC +1.95 / DC +1.85 / PTAT +3.15

View-Home POWERBALL-P

(Earnhardt P x Robust x Zenith)

US 08/14 (73%R) +1642M +0.05%F +0.08%P +75F +72P NM \$836 / GTPI +2477

US 08/14 CE 6.7 / DCE 3.7 / PL +4.9 / SCS 2.83 / DPR +1.9 / SSB 7.2 / DSB 3.9

US 08/14 UDC +2.42 / FLC +1.62 / BC +1.49 / DC +1.57 / PTAT +2.65





2nd DAM: Rainyridge Talent Barbara EX-95-5YR-USA



Calbrett Supersire Barb *RC

Calbrett Supersire Barb *RC

Reg.no. CAN 11658906 D.O.B. 11-January-2013

Genomic Index US 09/14 +2125M +90F +70P NM \$ 835 **GTPI +2482**
 US 09/14 PL +5.6 / SCS 2.89 / DPR +0.6 / SCE 8.1 / DCE 5.8
 US 09/14 FLC +2.56 / UDC +1.73 / PTAT +3.31

Details / Progeny - Barb *RC is one of the highest RC GTPI/GLPI Flush-Age heifers in the Breed!
 - Backed by a Tremendous Pedigree
 - She can make the HIGH ONES... First 2 Red Olympian Sons both over +2420G!

ONLINE BULL SALE
 Huge Opportunity to buy the next #1!

PEDIGREE

Seagull-Bay SUPERSIRE

Rainyridge Super Beth *RC
 Conf. VG-86-2YR-CAN

2-03 2x 365d 23.739lbM 3.7% 877F 3.5% 822P

• The Best of Both Worlds, Genomics from a Tremendous Type Family!

Charlesdale SUPERSTITION

Rainyridge Talent Barbara *RC
 Conf. EX-95-5YR

2-05 2x 298d 24.720lbM 4.1% 1.023F 3.2% 789P
 3-04 2x 365d 34.465lbM 3.6% 1.257F 3.3% 1.133P

- Unanimous All-American 5-Yr-Old
- Unanimous All-Canadian 5-Yr-Old • 1st 5-Yr-Old RWF 2010
- 1st 5-Yr-Old WDE 2010

Ladino Park TALENT

RF Outside Breeze
 Conf. EX-95-USA 2E

2-03 2x 365d 23.849lbM 6.2% 1.477F 4.3% 1.021P
 4-02 2x 365d 31.920lbM 4.7% 1.488F 3.5% 1.113P
 8-00 2x 365d 37.970lbM 3.9% 1.484F 3.4% 1.299P

Next Dams

- 4th Rayverley Briana Milan EX-CAN 2E
- 5th Rainyridge Tony Beauty EX-CAN 5E
- Grand Champion RWF '93
- Reserve Grand Champion RWF '95 & '99
- Grand Champion WDE '99
- 6th Despics Tempo Diana VG-CAN



18. All-rounder from the Fantastic ADEENS!

Details

Details about the bull in this package

BULL

Name	Genetic Test	ID	D.O.B.	Sire	Dam	Country
Butlerview Sho Chev55553	USA test	US 3010354300	26-March-2014	Vekis Chevrolet	Butlerview Uno Sho-Off	United States

Genomic Result

Genomic Results 08/14

Chip: 80K

USDA-CDCB GENOMIC - SIRE EVALUATIONS (08/2014)					
Milk	+1495	72%R	0 Dtrs	0 Herds	100% US
Fat	+76	+0.08%			
Protein	+50	+0.02%	EFI 6.9%	GFI 7.9%	
PL	+6.3	67%R	Net Merit \$		+845
SCS	2.65	69%R	Fluid Merit \$		+800
DPR	+2.2	65%R	Cheese Merit \$		+890
HCR	+2.6		CCR		+3.9

NAAB CALVING TRAIT'S EVALUATIONS (08/2014)				
Sire Calving Ease	8.3%	57%R	0 Obs	
Daughter Calving Ease	4.5%	52%R	0 Obs	
Sire Stillbirth	8.6%	51%R	0 Obs	
Daughter Stillbirth	4.8%	48%R	0 Obs	

USDA-CDCB / HA GENOMIC - TYPE (08/2014)					TPI +2418	
PTAT +2.34	70%R	UDC +2.24	FLC +2.04	0 Dtrs	0 Herds	
Stature	-2	-1	0	1	2	+1.28 Tall
Strength						+0.40 Strong
Body Depth						+0.23 Deep
Dairy Form						+1.13 Open Rib
Rump Angle						+0.75 Sloped
Thurl Width						+1.24 Wide
Rear Legs-Side View						-0.39 Posty
Rear Legs-Rear View						+1.80 Straight
Foot Angle						+2.18 Steep
Feet & Legs Score						+2.31 High
F. Udder Attachment						+2.37 Strong
Rear Udder Height						+3.39 High
Rear Udder Width						+3.12 Wide
Udder Cleft						+1.55 Strong
Udder Depth						+2.27 Shallow
Front Teat Placement						+0.69 Close
Rear Teat Placement						+0.64 Close
Teat Length						+0.63 Long

SIRE INFORMATION

Information about the sires in this package

Vekis CHEVROLET
(Freddie x Planet x Shottle)

US 08/14 (77%R) +2116M -0.01% +0.01% +77F +65P NM \$ 759 / GTPI +2313
 US 08/14 CE 7.5 / DCE 4.8 / PL +4.6 / SCS 2.86 / DPR +1.2 / SSB 7.6 / DSB 5.0
 US 08/14 UDC +1.63 / FLC +1.56 / BC +0.85 / DC +1.14 / PTAT +1.99





2nd DAM: Vision-Gen Sh Sho A12037 VG-87-2YR



DAM: Butlerview Uno Sho-Off



4th DAM: Ms Kingstead Chief Adeen EX-94

Butlerview Uno Sho-Off

Reg.no. US 71494804 D.O.B. 09-July-2012

Genomic Index US 08/14 +406M +58F +28P NM \$ 753 **GTPI +2394**
 US 08/14 PL +6.6 / SCS 2.48 / DPR +2.5 / SCE 8.9 / DCE 6.4
 US 08/14 FLC +2.59 / UDC +3.20 / PTAT +3.29

Details / Progeny - Tremendous Sire Stack
 - Her very complete Chevrolet son with nearly +1500lbs Milk, great components, Fitness and NM\$+845 SELLS

ONLINE BULL SALE
**High All-rounder
 from the Adeens
 SELLS!**

PEDIGREE

Amighetti NUMERO UNO

Vision-Gen Sh Sho A12024
 Conf. VG-85-2YR-USA

2-09 2x 365d 28.772lbM 4.5% 1301F 3.1% 906P

• Close family to Atwood, Golden Dreams, Aftershock and more!

Picston SHOTTLE

Ky-Blue GW Dana
 Conf. EX-91-4YR-USA

4-01 2x 185d 16.881lbM 4.5% 765F 3.2% 540P

• 4th Generation Excellent

Braedale Goldwyn

BVK Outside Diana
 Conf. EX-92-USA 2E DOM

2-05 365d 20.820lbM 3.5% 725F 3.3% 697P
 3-08 365d 27.631lbM 3.4% 933F 3.4% 944P
 5-01 365d 31.921lbM 3.5% 1.129F 3.2% 1.034P

• Maternal sister to MD-Delight Durham Atlee EX-92

Next Dams

4th BVK Outside Diana EX-92-USA 2E DOM
 4th Ms Kingstead Chief Adeen EX-94-USA 2E DOM
 5th Aitkenbrae Starbuck Ada EX-94-USA 2E DOM



19. Very Versatile Bull from the ADEENS!

Details

Details about the bull in this package

BULL

Name	Genetic Test	ID	D.O.B.	Sire	Dam	Country
IHG Defend Viking	USA test	US 73590604	18-July-2014	S-S-I Mogul Defender	Farnear-TBR-BH Valour	United States

Genomic Result

Genomic Results 09/14

Chip: 80K

USDA-CDCB GENOMIC - SIRE EVALUATIONS (09/2014)

Milk	+1013	72%R	0 Dtrs	0 Herds	% US
Fat	+51	+0.05%			
Protein	+44	+0.05%	EFI %	GFI	7.6%
PL	+5.2	%R	Net Merit \$		+696
SCS	2.70	%R	Fluid Merit \$		+626
DPR	+1.1	%R	Cheese Merit \$		+770
HCR	+1.8		CCR		+2.1

NAAB CALVING TRAITS EVALUATIONS (09/2014)

Sire Calving Ease	7.0%	57%R	0 Obs
Daughter Calving Ease	5.5%	51%R	0 Obs
Sire Stillbirth	6.8%	52%R	0 Obs
Daughter Stillbirth	6.2%	47%R	0 Obs

USDA-CDCB / HA - TYPE (09/2014) TPI +2383

PTAT +3.45 69%R UDC +3.26 FLC +3.60 0 Dtrs 0 Herds

	-2	-1	0	1	2		
Stature						+2.52	Tall
Strength						+2.31	Strong
Body Depth						+1.78	Deep
Dairy Form						+0.89	Open Rib
Rump Angle						-1.46	High Pins
Thurl Width						+2.37	Wide
Rear Legs-Side View						-1.00	Posty
Rear Legs-Rear View						+3.77	Straight
Foot Angle						+3.89	Steep
Feet & Legs Score						+3.78	High
F. Udder Attachment						+4.49	Strong
Rear Udder Height						+3.76	High
Rear Udder Width						+3.46	Wide
Udder Cleft						+2.14	Strong
Udder Depth						+3.60	Shallow
Front Teat Placement						+2.48	Close
Rear Teat Placement						+1.76	Close
Test Length						-1.11	Short

GPA-LPI	+3228
DGV-LPI	+3277
Production Traits	
Milk	+1303
%Fat	+0.20
Fat (lbs)	+69
%Prot	+0.13
Prot (lbs)	+57
Management Traits	
Herd Life	113
Daughter Calving Ability	104
Somatic Cell Score	2.77
Milking Speed	108
Composites and Conf.	
Mammary System	+14
Feet & Legs	+14
Dairy Strength	+6
Rump	+2
Conformation	+15

SIRE INFORMATION

Information about the sires in this package

S-S-I Mogul DEFENDER

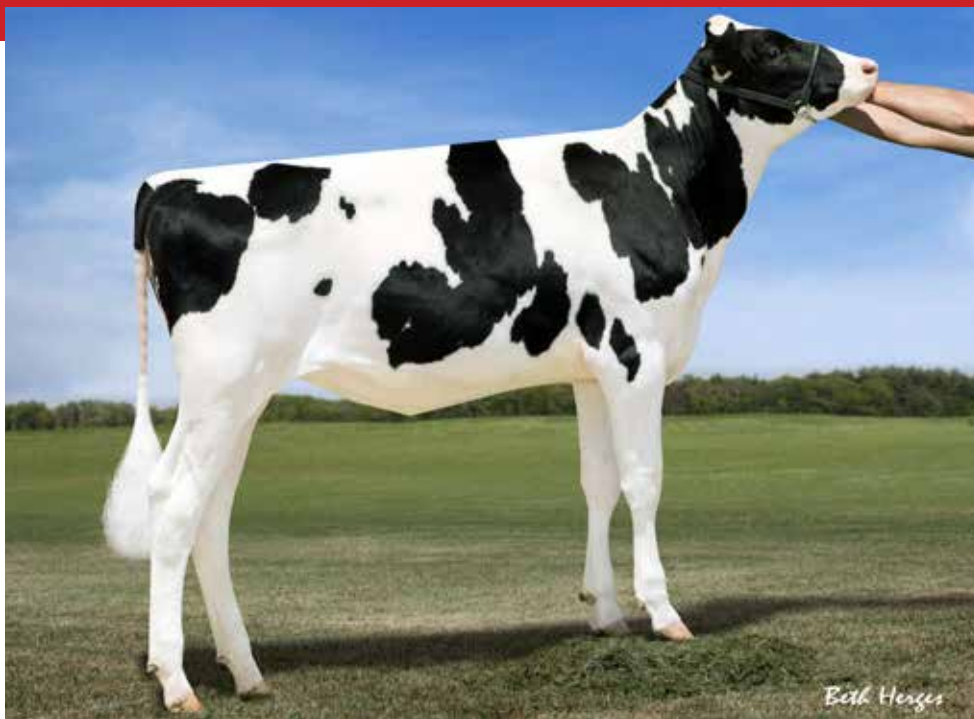
(Mogul x Man O Man x Shottle)

US 08/14 (76%R) +1128M +0.08% +0.05% +65F +49P NM \$ 766 / GTPI +2433

US 08/14 CE 6.0 / DCE 5.6 / PL +4.8 / SCS 2.60 / DPR +0.4 / SSB 6.8 / DSB 6.4

US 08/14 UDC +3.68 / FLC +3.42 / BC +1.79 / DC +1.57 / PTAT +3.36





Farneer-TBR-BH Valour



DAM: Vision-Gen Sh Sho A12037 VG-87-2YR



2nd DAM: Ky-Blue GW Dana EX-91-USA

Farneer-TBR-BH Valour

Reg.no. US 71290939 D.O.B. 01-December-2012

Genomic Index US 08/14 +1620M +64F +57P NM \$ 664 **GTPI +2274**
 US 08/14 PL +4.2 / SCS 2.86 / DPR +0.4 / SCE 6.9 / DCE 5.7
 US 08/14 FLC +1.82 / UDC +2.42 / PTAT +2.82

Details / Progeny - Beautiful Supersire daughter that is backed by the ADEENS!
 - Complete Package: Index, (Show-)Type, Fitness, Pedigree and a Top-Ranking GTPI!
 - Her very Allround Defender son sells as lot 19!

ONLINE BULL SALE
**High All-rounder
 from the Adeens
 SELLS!**

PEDIGREE

Seagull-Bay SUPERSIRE

Vision-Gen Sh Sho A12037
 Conf. VG-87-2YR-USA

2-02 305d 26.486lbM 3.7% 981F 3.4% 899P

• Close family to Atwood, Golden Dreams, Aftershock and more!

Picston SHOTTLE

Ky-Blue GW Dana
 Conf. EX-91-4YR-USA

4-01 2x 185d 16.881lbM 4.5% 765F 3.2% 540P

• 4th Generation Excellent

Braedale Goldwyn

BVK Outside Diana
 Conf. EX-92-USA 2E DOM

2-05 365d 20.820lbM 3.5% 725F 3.3% 697P
 3-08 365d 27.631lbM 3.4% 933F 3.4% 944P
 5-01 365d 31.921lbM 3.5% 1.129F 3.2% 1.034P

• Maternal sister to MD-Delight Durham Atlee EX-92

Next Dams

4th Ms Kingstead Chief Adeen EX-94-USA 2E DOM
 5th Aitkenbrae Starbuck Ada EX-94-USA 2E DOM



20. Fantastic Allround RED OFFERING

Details

Details about the bull in this package

BULL

Name	Genetic Test	ID	D.O.B.	Sire	Dam	Country
IHG Kanu 1057-Red	USA test	US 73899061	18-May-2014	Wilder Kanu P-Red	Ms Apples Uno Adele *RC	United States

Genomic Result

Genomic Results 09/14

Chip: 80K

USDA-CDCB GENOMIC - SIRE EVALUATIONS (08/2014)					
Milk	+964	73%R	0 Dtrs	0 Herds	100% US
Fat	+53	+0.07%			
Protein	+42	+0.05%	EFI 6.0%	GFI 7.0%	
PL	+5.6	86%R	Net Merit \$	+663	
SCS	2.68	69%R	Fluid Merit \$	+592	
DPR	+1.1	65%R	Cheese Merit \$	+738	
HCR	-0.3		CCR	-0.5	

NAAB CALVING TRAITS EVALUATIONS (08/2014)				
Sire Calving Ease	8.5%	56%R	0 Obs	
Daughter Calving Ease	5.1%	52%R	0 Obs	
Sire Stillbirth	7.6%	50%R	0 Obs	
Daughter Stillbirth	6.4%	48%R	0 Obs	

USDA-CDCB / HA GENOMIC - TYPE (08/2014)				TPI +2242			
PTAT +2.47	70%R	UDC +1.87	FLC +2.83	0 Dtrs 0 Herds			
Stature	-2	-1	0	1	2	+2.24	Tail
Strength						+1.18	Strong
Body Depth						+1.06	Deep
Dairy Form						+0.93	Open Rib
Rump Angle						+0.22	Sloped
Thurl Width						+1.59	Wide
Rear Legs-Side View						-1.23	Poaty
Rear Legs-Rear View						+3.11	Straight
Foot Angle						+2.87	Sleep
Feet & Legs Score						+2.06	High
F. Udder Attachment						+2.28	Strong
Rear Udder Height						+3.11	High
Rear Udder Width						+2.86	Wide
Udder Cleft						+0.82	Strong
Udder Depth						+1.70	Shallow
Front Test Placement						+0.86	Close
Rear Test Placement						+0.28	Close
Test Length						+0.27	Long

SIRE INFORMATION

Information about the sires in this package

Wilder Kanu P-Red

(Colt P-Red x Snowman x Shottle)

US 08/14 (77%R) +1335M -0.18% -0.03% +2F +30P NM \$ 453 / GTPI +1977
 US 08/14 CE 7.7 / DCE 5.1 / PL +5.0 / SCS 2.70 / DPR -0.2 / SSB 6.6 / DSB 6.2
 US 08/14 UDC +2.47 / FLC +2.20 / BC +0.88 / DC +0.30 / PTAT +2.19





2nd DAM: KHW Regiment Apple-Red EX-96 DOM



DAM: Ms Apples Uno Adele *RC



3rd DAM: Kamps-Hollow Altitude *RC EX-95

Ms Apples Uno Adele *RC *TV

Reg.no. US 72227619 D.O.B. 30-October-2012

Genomic Index
 US 08/14 -247M +71F +25P NM \$ 576 **GTPI +2187**
 US 08/14 PL +3.6 / SCS 2.75 / DPR +1.1 / SCE 8.7 / DCE 6.4
 US 08/14 FLC +2.75 / UDC +2.64 / PTAT +2.93

Details / Progeny
 - Tremendous Transmitter!
 - *TV daughter of APPLE EX-96
 - Her GTPI+2242 RED Kanu son sells!



PEDIGREE

Amighetti NUMERO UNO

KHW Regiment Apple-Red
 Conf. EX-96-USA DOM

2-02 2x 365d 28.930lbM 4.5% 1.297F 3.6% 1.033P
 4-01 2x 365d 35.750lbM 4.7% 1.682F 3.7% 1.314P
 Life: 1972d 158.682lbM 4.8% 7.683F 3.8% 6.034P

- Res. Grand Champion R&W WDE 2013
- Grand Champion R&W WDE 2011
- All-American R&W Aged Cow 2011
- World Champion R&W Cow (HI) 2010
- Res. Grand Champion RWF 2009
- Several sons in AI

Carrousel REGIMENT-RED

Kamps-Hollow Altitude *RC
 Conf. EX-95-USA 2E DOM

7-00 2x 365d 39.690lbM 4.7% 1.849F 3.5% 1.385P
 Life: 1844d 144.460lbM 4.4% 6.295F 3.7% 5.288P

- Red Impact Cow of the Year 2009
- Wisconsin Cow of the Year 2009
- Dam to Advent, Jotan & Acme *RC

Regancrest Elton DURHAM

Clover-Mist Alisha
 Conf. EX-93-USA 3E DOM

5-03 365d 34.670lbM 4.8% 1.653F 3.5% 1.219P
 8-07 365d 36.921lbM 4.2% 1.552F 3.4% 1.259
 Life: 226.472lbM 4.7%F 3.6%P

Next Dams

- 4th Clover-Mist Augy Star EX-94-USA 4E DOM
- 5th D-R-A August EX-96-USA 4E DOM
- 6th D-R-A Ideal Precious Leader EX-90-USA 2E
- 7th D-R-A Princess Lad Leader EX-90-USA 3E



21. From the Fantastic Cosmopolitans!

Details

Details about the bull in this package

BULL

Name	Genetic Test	ID	D.O.B.	Sire	Dam	Country
DG TM Halo Commerce-ET	USA test	US 21ZRN4392	05-June-2014	Cookiecutter Petron Halogen	Larcrest Case-ETS	United States

Genomic Result

Genomic Results 09/14

Chip: 13K

USDA-CDCB GENOMIC - SIRE EVALUATIONS (09/2014)						
Milk	+1216	72%R		0 Dtrs	0 Herds	% US
Fat	+73	+0.11%				
Protein	+43	+0.03%	EFI %		GFI	7.2%
PL	+6.9	%R	Net Merit \$			+865
SCS	2.38	%R	Fluid Merit \$			+791
DPR	+1.8	%R	Cheese Merit \$			+930
HCR	+1.6		CCR			+2.6

NAAB CALVING TRAITS EVALUATIONS (09/2014)				
Sire Calving Ease	6.9%	57%R		0 Obs
Daughter Calving Ease	4.9%	51%R		0 Obs
Sire Stillbirth	7.3%	52%R		0 Obs
Daughter Stillbirth	5.0%	48%R		0 Obs

USDA-CDCB / HA - TYPE (09/2014)				TPI +2380			
PTAT +2.34	71%R	UDC +2.05	FLC +1.42	0 Dtrs 0 Herds			
Stature	-2	-1	0	1	2	+1.25	Tall
Strength						+0.84	Strong
Body Depth						+0.84	Deep
Dairy Form						+1.42	Open Rib
Rump Angle						-0.33	High Pins
Thurl Width						+0.88	Wide
Rear Legs-Side View						+0.27	Sickle
Rear Legs-Rear View						+1.59	Straight
Foot Angle						+0.91	Steep
Feet & Legs Score						+1.86	High
F. Udder Attachment						+2.41	Strong
Rear Udder Height						+3.12	High
Rear Udder Width						+2.87	Wide
Udder Cleft						+2.93	Strong
Udder Depth						+1.57	Shallow
Front Teat Placement						+2.44	Close
Rear Teat Placement						+2.61	Close
Teat Length						-0.90	Short

SIRE INFORMATION

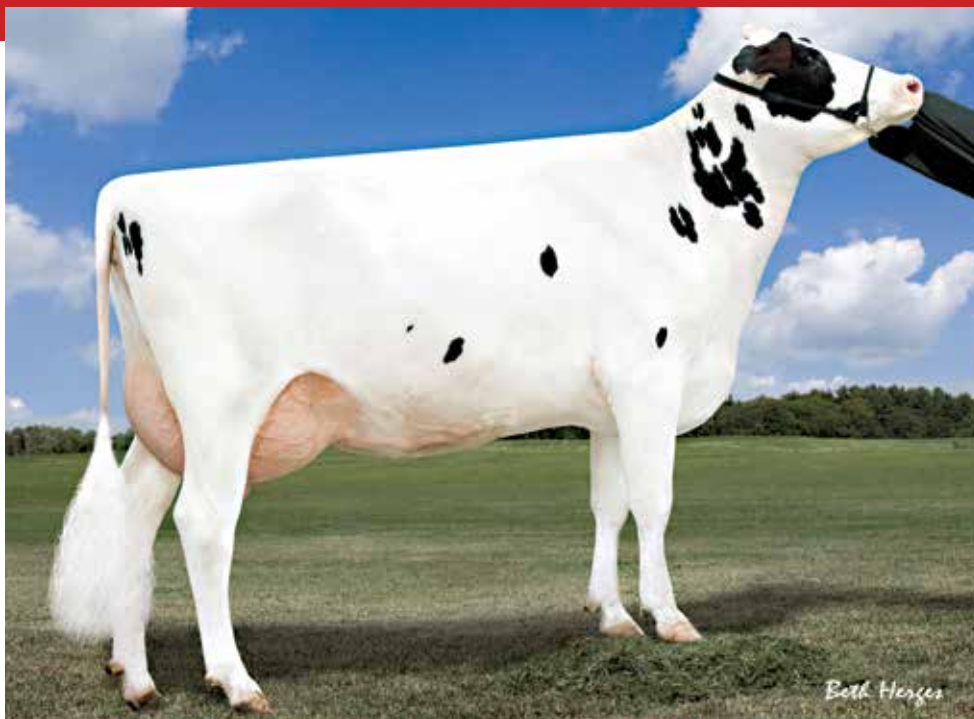
Information about the sires in this package

Cookiecutter Petron HALOGEN

(Petrone x Man O Man x Goldwyn)

US 08/14 (75%R) +958M +0.08% +0.03% +54F +37P NM \$ 882 / GTPI +2487
 US 08/14 CE 6.8 / DCE 4.8 / PL +7.9 / SCS 2.36 / DPR +3.7 / SSB 7.6 / DSB 5.2
 US 08/14 UDC +3.06 / FLC +1.21 / BC +1.83 / DC +1.67 / PTAT +2.88





Larcrest Case-ETS VG-86 DOM



2nd Dam: Larcrest Cosmopolitan VG-87



DAM: Larcrest Crimson EX-92 GMD DOM

Larcrest Case

Reg.no. US 56264512 **D.O.B.** 9-April-2009
Classification Very Good-86-3YR VG-MS DOM
Production 2-06 2x 365d 37550lbM 3.7% 1398F 3.6% 1.361P
Genomic Index US 08/14 +1609M +78F +62P NM \$ 729 **GTPI +2228**
 US 08/14 PL +4.9 / SCS 2.78 / DPR -0.1 / SCE 7.3 / DCE 6.2
 US 08/14 FLC +1.47 / UDC +1.12 / PTAT +2.15



Details / Progeny - Tremendous Pedigree Planet x Ramos x Shottle x Outside x Juror!
 - Her Allround & EARLY Halogen son sells! HUGE Health Traits, >1200lbs Milk and Great Calving Traits!

PEDIGREE

Ensenada Taboo PLANET

Larcrest Crimson
Conf. EX-92 EX-MS GMD DOM

2-04 2x 365d 30.930lbM 4.1% 1.261F 3.6% 1.119P
 5-00 2x 365d 46.390lbM 5.3% 2.448F 3.7% 1.708P

- Grand dam of Commander, Chevrolet, Fanatic and many more!

RAMOS

Larcrest Cosmopolitan
Conf. VG-87 GMD DOM

2-04 2x 365d 30.930lbM 4.1% 1.261F 3.6% 1.119P

- Dam of Cancun, Contrast, O-Cosmopolitan and more!
- Tremendous Brood Cow!

Picston SHOTTLE

Larcrest Oside Champagne
Conf. EX-90 EX-MS GMD DOM

2-03 2x 365d 29.110lbM 4.5% 1.322F 3.7% 1.077P
 6-00 2x 365d 26.270lbM 4.9% 1.290F 3.4% 889P

- 17 sons in AI

Next Dams

4th Larcrest Juror Chanel EX-93 3E GMD DOM
 4th Larcrest Lindy Chandra VG-85-USA
 5th Larcrest Inspiration Carly VG-87-USA



22. PTAM+2202, +180 Fat + Protein EARLY Flame Son!

Details

Details about the bull in this package

BULL

Name	Genetic Test	ID	D.O.B.	Sire	Dam	Country
Mr Daling Flame 57799	USA test	US 3010356546	16-April-2014	Vieuxsaule Flame	Seagull-Bay Snow Darling	United States

Genomic Result

Genomic Results 08/14

Chip: 3K

USDA CDCB GENOMIC - SIRE EVALUATIONS (08/2014)					
Milk	+2202	72%R	0 Dtrs	0 Herds	100% US
Fat	+104	+0.09%			
Protein	+76	+0.04%	EFI 6.9%	GFI 7.6%	
PL	+3.5	66%R	Net Merit \$	+764	
SCS	2.75	68%R	Fluid Merit \$	+715	
DPR	-0.4	64%R	Cheese Merit \$	+625	
HCR	+1.2		CCR	+0.4	

NAAB CALVING TRAITS EVALUATIONS (08/2014)			
Sire Calving Ease	8.9%	55%R	0 Obs
Daughter Calving Ease	6.6%	51%R	0 Obs
Sire Stillbirth	8.3%	49%R	0 Obs
Daughter Stillbirth	7.7%	47%R	0 Obs

USDA CDCB / HA GENOMIC - TYPE (08/2014)		TPI +2425					
PTAT +2.56	70%R	UDC +2.21	FLC +2.67	0 Dtrs	0 Herds		
Stature	-2	-1	0	1	2	+3.11	Tall
Strength						+1.94	Strong
Body Depth						+2.19	Deep
Dairy Form						+2.67	Open Rib
Rump Angle						+0.39	Sloped
Thurl Width						+2.35	Wide
Rear Legs-Side View						+0.13	Sickle
Rear Legs-Rear View						+2.15	Straight
Foot Angle						+2.25	Sleep
Feet & Legs Score						+2.28	High
F Udder Attachment						+2.29	Strong
Rear Udder Height						+4.08	High
Rear Udder Width						+3.75	Wide
Udder Cleft						+3.03	Strong
Udder Depth						+1.33	Shallow
Front Test Placement						+2.08	Close
Rear Test Placement						+2.38	Close
Test Length						+0.83	Long

SIRE INFORMATION

Information about the sires in this package

Vieuxsaule FLAME

(Numero Uno x Freddie x Bolton)

US 08/14 (74%R) +641M +0.25% +0.09% +91F +45P NM \$ 868 / GTPI +2503
 US 08/14 CE 8.0 / DCE 5.5 / PL +6.4 / SCS 2.61 / DPR +2.6 / SSB 7.6 / DSB 6.1
 US 08/14 UDC +2.53 / FLC +2.49 / BC +2.31 / DC +1.93 / PTAT +2.94





DAM: Seagull-Bay Snow Darling VG-85-2YR



2nd DAM: Ammon-Peacey Shauna VG-87-2YR



4th DAM: Wesswood-HC Rudy Missy EX-92

Seagull-Bay Snow Darling

Reg.no. US 70640273 D.O.B. 22-July-2011
 Classification Very Good-85-2YR
 Production 2-06 236d 24.409lbM 3.3% 807F 3.1% 745P

Genomic Index US 08/14 +2458M +76F +70P NM \$ 605 **GTPI +2220**
 US 08/14 PL +2.8 / SCS 2.84 / DPR -0.4 / SCE 7.5 / DCE 4.9
 US 08/14 FLC +1.53 / UDC +1.52 / PTAT +2.45

Details / Progeny - Tremendous Transmitter, several high testing offspring!
 - Her GTPI+2425, PTAM+2202 Flame son sells!



PEDIGREE

Flevo Genetics Snowman

Ammon-Peacey Shauna
 Conf. VG-87-2YR-USA 88-MS DOM

2-01 3x 340d 32.765lbM 4.1% 1.336F 3.0% 999P

- Dam to Supersire, Platinum, Headliner, Diamond, Shaw, Sargeant, MVP and MORE!
- Grand dam to Seagull-Bay Silver

Ensenada Taboo Planet

Pine-Tre Martha Sheen
 Conf. VG-86 VG-MS DOM

1-11 3x 365d 31.210lbM 4.2% 1.305F 3.3% 1.027P

Picston Shottle

Pine-Tree Missy Martha
 Conf. VG-86 VG-MS DOM

2-02 3x 365d 34.730lbM 3.6% 1.266F 3.3% 1.136P
 3-05 3x 365d 32.220lbM 3.9% 1.242F 3.4% 1.111P

- Her Finley sister is the dam to Pine-Tree SID

Next Dams

- 4th Wesswood-HC Rudy Missy EX-92 3E GMD DOM
- 5th Wesswood Elton Mimi EX-90 GMD DOM
- 6th Wesswood Mandingo Ivy VG-87
- 7th Wesswood Astro Matt Esther VG-87 GMD DOM
- 8th Wesswood Bell Claudette VG-87 GMD DOM



23. GTPI+2526, DPR+3.4 & 3.95UDC from the BARBIES!

Details

Details about the bull in this package

BULL

Name	Genetic Test	ID	D.O.B.	Sire	Dam	Country
Maverick Halo Bentley	USA test	US 73963288	27-July-2014	Cookiecutte Petron Halogen	Ms Boyana Uno Brinley	United States

Genomic Result

Genomic Results 09/14

Chip: 80K

USDA-CDCB GENOMIC - SIRE EVALUATIONS (09/2014)				
Milk	+393	72%R	0 Dtrs	0 Herds % US
Fat	+60	+0.18%		
Protein	+26	+0.05%	EFI %	GFI 7.9%
PL	+8.3	%R	Net Merit \$	+880
SCS	2.51	%R	Fluid Merit \$	+788
DPR	+3.4	%R	Cheese Merit \$	+967
HCR	+3.3		CCR	+4.2

NAAB CALVING TRAITS EVALUATIONS (09/2014)			
Sire Calving Ease	8.0%	58%R	0 Obs
Daughter Calving Ease	4.8%	52%R	0 Obs
Sire Stillbirth	8.3%	52%R	0 Obs
Daughter Stillbirth	5.6%	48%R	0 Obs



SIRE INFORMATION

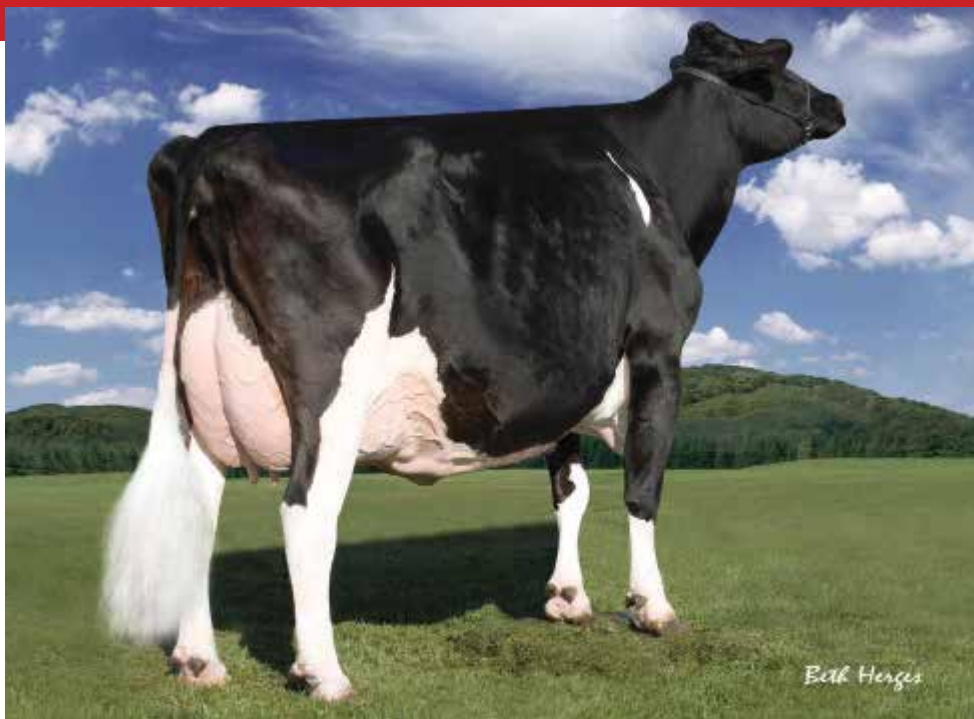
Information about the sires in this package

Cookiecutter Petron HALOGEN

(Petrone x Man O Man x Goldwyn)

US 08/14 (75%R) +958M +0.08% +0.03% +54F +37P NM \$ 882 / GTPI +2487
 US 08/14 CE 6.8 / DCE 4.8 / PL +7.9 / SCS 2.36 / DPR +3.7 / SSB 7.6 / DSB 5.2
 US 08/14 UDC +3.06 / FLC +1.21 / BC +1.83 / DC +1.67 / PTAT +2.88





4th DAM: Regancrest-PR Barbie EX-92 GMD DOM



DAM: Ms Boyana Uno Brinley



2nd DAM: Farnear-TBR-BH Bowr Boyana VG-85

Ms Boyana Uno Brinley

Reg.no. US 71494817 D.O.B. 05-August-2012

Genomic Index US 08/14 +707M +43F +32P NM \$ 690 **GTPI +2390**
 US 08/14 PL +6.5 / SCS 2.66 / DPR +1.1 / SCE 8.6 / DCE 6.1
 US 08/14 FLC +4.12 / UDC +2.92 / PTAT +3.95

Details / Progeny - Tremendous Heifer and Great Transmitter!
 - Unique & OUTCROSS maternal line going back to BARBIE!
 - Her #1 GTPI son Sells by Halogen (GTPI+2526)

ONLINE BULL SALE
GTPI+2526
 Halogen x Brinley
 sells!

PEDIGREE

Amighetti NUMERO UNO

Farnear-TBR-BH Bowsr Boyana
 Conf. VG-85-2YR VG-MS

2-02 2x 365d 20.936lbM 5.4% 1.133F 3.2% 663P

• Tremendous OUTCROSS going back to the BARBIES!

Laeschway Jet BOWSER

Klassic Mac Barb
 Conf. VG-85-2YR VG-MS

2-05 2x 365d 30.349lbM 4.0% 1.206F 3.5% 1.067P

Regancrest-HHF MAC

Regancrest Barbi
 Conf. EX-90 DOM

5-00 2x 305d 27.379lbM 3.2% 869F 3.5% 948P

Next Dams

- 4th Regancrest-PR Barbie EX-92-USA GMD DOM
- 5th Regancrest Juror Brina EX-92-USA GMD
- 6th Regancrest Aerostar Bert EX-9-USA GMD DOM
- 7th Regancrest Mark Chairman Bea EX-91 GMD DOM
- 8th Regancrest Board Chairman Bea EX-90-USA
- 9th Regancrest Apache Standout Bea VG-86-USA
- 10th Regancrest Standout Betrand VG-85-USA



Terms & Conditions

General Terms and Conditions for www.bull-sale.com/

Changes in the General Terms and Conditions can be made until the start of the auction, check the auction conditions posted online before the start of auction.

Article 1. Definitions

Website: the website www.amsbullsale.com, owned and maintained by AMS Genetics International LLC with its registered seat in Boonsboro, Maryland;

User: the one who has registered with Personal Details on the Website;

Personal Details: the details provided by the User that are traceable to his or her person, including name/address/city of residence details and e-mail address;

AMS Genetics International LLC and/or its subsidiary/ies or sister company/ies as reported on the Website;

Registration: the registration of User on the Website through filling in the complete registration form found on the Website;

Bid: each amount bid on a lot by an User in the auction;

Lot: an article, or a number of articles that are auctioned together (under one lot number);

Auction: the public auction of moveable goods organized by AMS Genetics International LLC via the internet;

Purchaser: the User to whom the Lot is allocated;

User's Agreement: the agreement between AMS Genetics International LLC and the User;

Article 2. User's Agreement

2.1 The User's Agreement arises through Registration on the Website and places the User in the position to follow the progress of Auctions on the Website, among other things. The User's Agreement cannot be transferred to another party. In the Registration the User provides his personal details to AMS Genetics International LLC and chooses his or her own password for access to the Website.

2.2 AMS Genetics International LLC confirms the Registration by an email to the User at the email address submitted by the latter, after which the User has access to the Auction by means of his or her password. The User is obligated, after gaining access to the Website, to behave decently and not to damage the Website or other Users of the Website. The User is liable for all actions that occur on the Website after he or she has gained access by means of his or her password.

2.3 The User guarantees the accuracy and completeness of the Personal Details supplied during Registration. If the Personal Details change at any time, the User is obligated to inform AMS Genetics International LLC of this change.

2.4 AMS Genetics International LLC reserves the right to refuse and/or terminate the right to Registration unilaterally.

2.5 AMS Genetics International LLC enters the Personal Details acquired by it into administrative records kept for that purpose. Through Registration on the Website, the User gives permission for the use and filing of the Personal Details registered.

2.6 The User is forbidden to duplicate the Website or any part thereof or to make it available (via deeplinks or in any other way) without prior written and signed permission from AMS Genetics International LLC.

2.7 Through a (one-time) Registration, the User accepts the General Terms and Conditions for the User for every time that the User logs on the Website, regardless of whether he or she makes any bids.

Article 3. The Auction

3.1 AMS Genetics International LLC reserves the right to cancel an Auction, to terminate an Auction earlier than reported on the Website or to extend one. In case of a technical malfunction of the Website, causing it to be not completely accessible and/or inaccessible to Users, AMS Genetics International LLC has the right to extend the Auction by 24 hours.

3.2 The User states by his Registration that he or she is familiar with and agrees with the special circumstances of an internet auction and with the technical imperfections that can arise. AMS Genetics International LLC denies any liability for whatever damage that may arise in any way, directly or indirectly, including but not limited to the damage arising from the use of the Website, unless there has been deliberate or conscious negligence by AMS Genetics International LLC. More particularly, AMS Genetics International LLC accepts no liability for any damage whatsoever that arises in any way by or from:

- actions performed by the User that may have been inspired by the information placed on the Website;
- the impossibility of using the Website (completely) and/or another malfunction in the Website or the supporting system;
- the Lots not meeting the specifications as reported on the Website;
- the fact that the information on the Website is incorrect, incomplete or out of date;
- errors in the software of the Website and/or the supporting system;
- the unlawful use of systems, including the Website of AMS Genetics International LLC, by a third party.



Terms & Conditions

Article 4. Security

- 4.1 AMS Genetics International LLC strives, in accordance with the requirements of reasonableness, to secure its systems against loss of data and/or against any form of unlawful use and implements the appropriate technical and organizational measures, whereby account is taken of the status of the technology, among other things.
- 4.2 However, AMS Genetics International LLC is not liable for loss of data, damage to files, unlawful access to computers or files, viruses spread via the Website or other unlawful programs or files or any other consequence of the use that is made of the Website.
- 4.3 The Website can contain links to other websites. AMS Genetics International LLC has no authority over such sites and is not liable for the content of those sites.

Article 5. Liability

- 5.1 The liability of AMS Genetics International LLC, if and insofar as the other remaining stipulations of the General Terms and Conditions for the User and (if applicable) of the General and Specific Terms and Conditions of the Online Auction are applied, will still be limited to the amount to which the liability insurance of AMS Genetics International LLC accords AMS Genetics International LLC in the instance in question, increased by the amount of excess according to the policy in question, or, if it is less, to the invoiced amount that is involved in the commission. This limitation does not apply in the event of deliberate or gross negligence by AMS Genetics International LLC .
- 5.2 AMS Genetics International LLC is not liable for indirect or consequential loss. Further, all liability of AMS Genetics International LLC in connection with any defect in the Lot(s) or in respect of (alleged) infringement of the rights of (the intellectual property of) third parties is excluded.
- 5.3 In consulting with third parties, AMS Genetics International LLC will take the necessary caution into consideration. AMS Genetics International LLC is not liable for possible shortcomings of these third parties.

Article 6. Adjustments; effect

- 6.1 If and insofar as any stipulation of the General Terms and Conditions for the User is null and void or is nullified, the remaining stipulations of the General Terms and Conditions for the User will remain undiminished in force. AMS Genetics International LLC will then determine a new stipulation to replace the null/nullified stipulation, by which the intent of the null/nullified stipulation will be taken into consideration.
- 6.2 In addition to these General Terms and Conditions for the User, AMS Genetics International LLC can declare the General Terms and Conditions and Specific Terms and Conditions of the Online Auction to be applicable. This needs to be confirmed by the User before the Auction. In the event of contradiction, that which is stipulated in the General or Specific Terms and Conditions of the Online Auction will be given preference above that which is stipulated in the present General Terms and Conditions for the User.
- 6.3 Departures from these General Terms and Conditions for the User can occur solely insofar as this is fixed in writing and signed by an authorized representative of AMS Genetics International LLC .
- 6.4 AMS Genetics International LLC reserves the right to amend these General Terms and Conditions for the User at any given time until the start of the auction. Amendments will take effect immediately after they have been announced on the website.

Article 7. Auction Items

- 7.1 An auction lot may contain a number of bulls and or pregnancies and or implanted embryos not checked for pregnancy. A first choice bull calf is being sold.
- 7.2 In case a first choice from pregnancies is being offered the choice needs to be made before the youngest bull of the group reaches the age of 3 months, unless genomic test results are not available due to a failure of either the consigner or sale management. In case a first choice from live calves is being offered the choice needs to be made within 3 months of closing of the sale, unless genomic test results are not available due to a failure of either the consignor or sale management.
- 7.3 The selected bull(s) has/have to leave the seller's place no later than when the bull(s) reaches the age of 8 months. If not, the seller has the right to ask for a daily allowance of \$8.00 per day per bull for board.
- 7.4 Any fees charged by the USA based CDCB (Council on Dairy Cattle Breeding) for genomic updates or activating the genomic index on auctioned bulls, will be paid for by the buyer. The buyer therefore will bear all future obligations that go with using official GTPI's in marketing auctioned bulls. AMS Genetics International, LLC, and the seller are not responsible any future claims or contributions to be paid to the CDCB.
- 7.5 Buying a first choice on this auction means that the buyer is obliged to pay invoices for auction price, sales commission and applicable costs. Also in those cases that the genomic index of the first choice bull does not meet buyer's standards, the buyer stays obliged to pay for the bull(s) involved and additional expenses.
- 7.6 AMS Genetics International, LLC and the consigners have double checked and carefully listed the number of pregnancies and, if applicable, the sex of the pregnancies. AMS Genetics International, LLC and the consigners cannot be held responsible for any omissions. If any omissions in the number of pregnancies or sex should occur then this cannot be a reason to withdraw from a purchase.



Terms & Conditions

Article 8. Guarantees and export

8.1 Bulls offered for selection are to be sound and in good health. Prior to delivery the bulls are tested negative for TB, Brucellosis, Leptospirosis (5 serovars) and BVD. Bulls must have two testicles and are free of hernias. A purchase is valid when there is at least one bull per auction lot full filling the veterinarian tests written above. If additional testing is needed please contact the sales management prior to the auction for testing of an individual bull.

8.2 All Bulls are guaranteed free of Leucosis & IBR, uterine dams are guaranteed free of leucosis. At the time the bulls are picked up for transit to the collection center.

8.3 The auction organization does its utmost to inform about the status for BLAD, Brachyspina and CVM. However, if auctioned bulls turn out to be carriers after the auction, this will not influence the selling price of the first choice bull calf.

8.4 The ownership risk of the bulls transfers from the seller to the buyer when they reach the age of 8 months or at the moment the bull leaves the seller's farm. The moment the bull enters the transport vehicle leaving the farm the risk transfers. This according to ICO Terms EXW (Exit Works). The buyer can do a visible inspection of the bull before the risk of ownership changes. Bulls will be checked by a official state accredited Veterinarian before leaving the sellers facilities.

8.5 The seller and AMS Genetics International LLC do not give any kind of semen production guarantee. However, insurances regarding bull mortality and semen production are being offered by W.B. White Insurance, ON, Canada. Sellers as well as AMS Genetics International are no party in any agreements between buyers and this insurance company.

8.6 Export restriction or restrictions on a specific farm where the bulls are being held can be a reason to cancel the purchase.

8.6.1 The bulls sold within the USA or Canada has to be able to move to an AI company or Semen collection center in Canada or the USA.

8.7 If a lot sells with a guarantee of a number of bulls to choose from, the seller guarantees that this number of bulls will be offered to the buyer. These bulls need to meet the criteria described under article 8.1. If the guaranteed minimum number of bulls is not available, the buyer has the right to cancel the purchase after genomic testing the bulls that are offered to him as part of this agreement. In case the buyer cancels the purchase, he is being reimbursed for his 25% down payment plus sale commission.

Article 9. Bids

9.1 The auction will work with the "8 - minute rule". Each time someone bids within the last 8 minutes of an auction, the closing time is extended by another 8 minutes until no more bids are placed.

9.2 The auction will also work with a "proxy-bid". With a proxy bid the user indicates the maximum price that he is willing to pay for the lot. The auction system will automatically increase the bidders bid if he is outbid by another bidder. This process continues automatically until the bidder's maximum bid is reached. If another bidder places a static bid equal to the maximum of the bidders earlier placed automatic bid, the automatic bid comes first (an automatic bid beats the static bid).

9.3 All bid amounts are stated in U.S. dollars. Note: All invoicing will be done in U.S. dollars and payment will be made in U.S. dollars.

9.4 Up to a bid of \$10,000, the bids will increase with \$250, increments. After a bid of \$10,000,-- is placed, the bids will increase with \$500,-- (bid increment).

Article 10. Auction commission, V.A.T./taxes and payment terms

10.1 The buyers auction commission is 10% on top of the successful bid. Where the buyer has to be charged V.A.T./taxes this will be added to the auction commission.

10.2 The price bid for the bulls does not include transport or export costs. Where V.A.T./taxes has to be charged this will be added to the auction price.

10.3 If for any reason no sound bulls become available, the down payment and the auction commission will be refunded to the buyer. Note: All refunds or adjustments will be made and paid in US Dollars and are limited to the amount of the original invoice in US Dollars. No adjustment will be made for any currency fluctuation, including due to timing of the return of deposit payment, or damages is completely at the risk of the seller or bidder or buyer as the case may be.

Article 11. Statement of the auction organization and the website designer Axis 80 Interactive webdesign

11.1 The auction organization AMS Genetics International LLC and Axis 80 Interactive webdesign emphasize that the auction organization has no access and will also not do anything to get access to the proxybids. This to ensure an honest and equal bidding procedure. Any abuse of this by any party will be seen as a criminal act and handed to the responsible authorities.

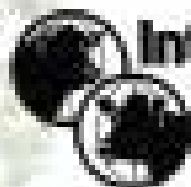
11.2 AMS Genetics International LLC, her sister companies and its employees have the right to act as a buyer and a seller in the auction.

Article 12. Applicable law

12.1 The General Terms and Conditions for the User and to the legal relationships that are associated with the Auction shall be governed by the rules of Maryland Law, excluding its choice of law provision.

12.2 The U.S. text of the General Terms and Conditions for the User is the original text. In the event that the General Terms and Conditions for the User are used in several languages, the U.S. text will therefore be given preference in case of lack of clarity or contradictions.

12.3 The Buyer and Seller consent to personal jurisdiction and exclusive jurisdiction in the Courts of the State of Maryland located in Washington County Maryland (subject to the possibility of appeal and to laws that state otherwise) to decide in differences arising from the General Terms and Conditions for the User, to the exclusion of every other instance.

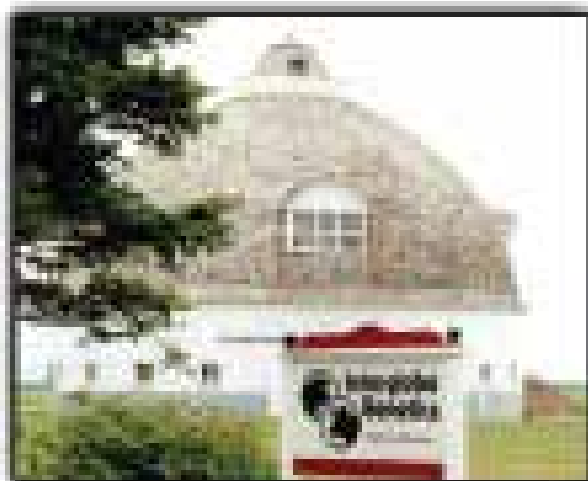


Interglobe Genetics

Pontiac, Illinois

Interglobe Genetics is one of the nation's most well respected bovine semen collection centers.

- ✔ Located in Pontiac, Illinois, we are continuously providing the most dependable, professional service in the industry.
- ✔ Your animal's health, reproductive performance, and cost are our primary goals.
- ✔ Our facilities are designed to accommodate the housing and collection of bulls for both domestic and international sources.
- ✔ Our services also include the storage and shipping of semen internationally from within the U.S.
- ✔ Visit our web site for more detailed information, or send us an email.
- ✔ We have programs to fit everyone's genetic goals.



International Collection Barn

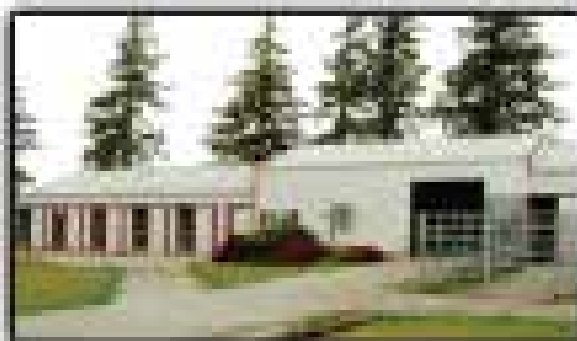
The international and CIS barns house bulls for collection in various countries including the Dominican Community, Australia, Canada, Mexico, and New Zealand. A new extension of the international barn is complete and ready for bulls.

Domestic Collection Barn

This is our main barn for housing and collection of semen for domestic use. Many of the stalls have the convenience of air outside runs for the bulls' comfort.

Office, Lab and Semen Storage

The Interglobe business office, laboratory and semen storage are housed in this facility. The Interglobe staff provides dependable, professional service to customers by offering semen storage, shipping, AI supply, and more.



Round Barn With Sign

Built in 1998 the round barn at Interglobe Genetics has become a symbol of the business. This barn is on the list of National Historic Sites, and is one of the few barns of its kind left in the country.



Interglobe Genetics

14814 R 1500 East Road • Pontiac, IL

phone: (815) 815-6788 • fax: (815) 815-6782

email: info@interglobegenetics.com • www.interglobegenetics.com



